



January 16th, 2024 | 4:30 PM ET • 3:30 PM CT • 2:30 PM MT • 1:30 PM PT

Prostate Cancer Screening IMPACT

ECHO

Session 0: ECHO Orientation

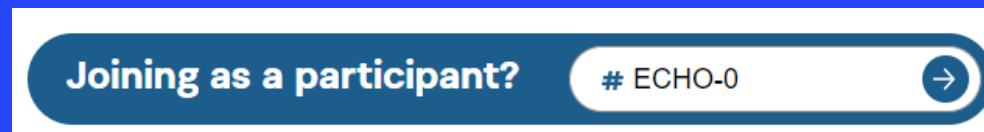
Welcome to the Prostate Cancer Screening IMPACT ECHO Session 0: ECHO Orientation!



1. Type your full name, the full name of your organization, and e-mail in the chat box.
2. We will be using Slido throughout our session. Please login!



To join: <https://www.slido.com>



Welcome to the Orientation Session of the **Prostate Cancer Screening IMPACT ECHO**



Each ECHO session will be recorded and **may** be posted to a publicly-facing website. Chat content, attendance, and poll responses are also recorded



Please update your Zoom Participant Name to First Last, Org (Molly Black, ACS).



Type your full name, the full name of your organization, and e-mail in the chat box.



You will be muted with your video turned off when you join the call. Use the buttons in the black menu bar to unmute your line and to turn on your video.



Today's materials will be made available on our [ACS ECHO website](#).



All ECHO sessions take place on the [iECHO](#) & Zoom platforms. [iECHO Terms of Use & Zoom Privacy Policy](#).

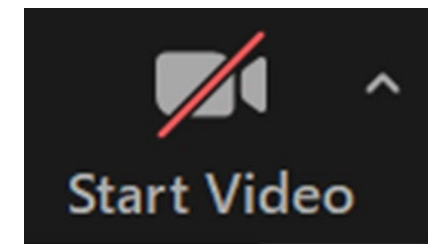
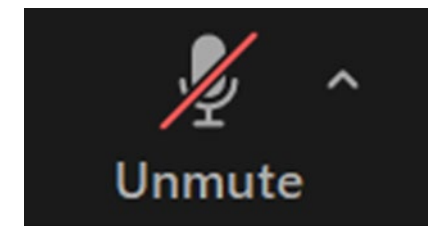
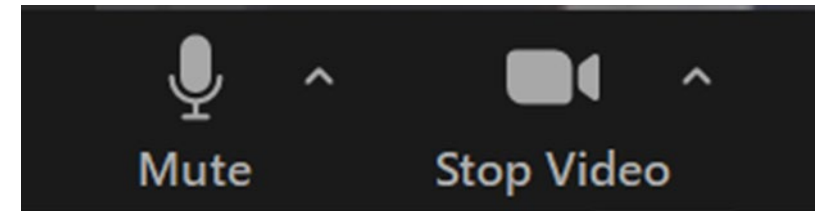


Questions about Zoom or Slido during the call? Find @Beth Graham in the chat.

Zoom Essentials for ECHO

How to Access Your Camera & Microphone

- If you move your mouse around on your screen you should see two options appear **in the bottom left corner: Mute and Video**
- By clicking on the **microphone, you can mute and unmute your audio**
- By clicking on **start video or stop video you can turn your camera on and off**



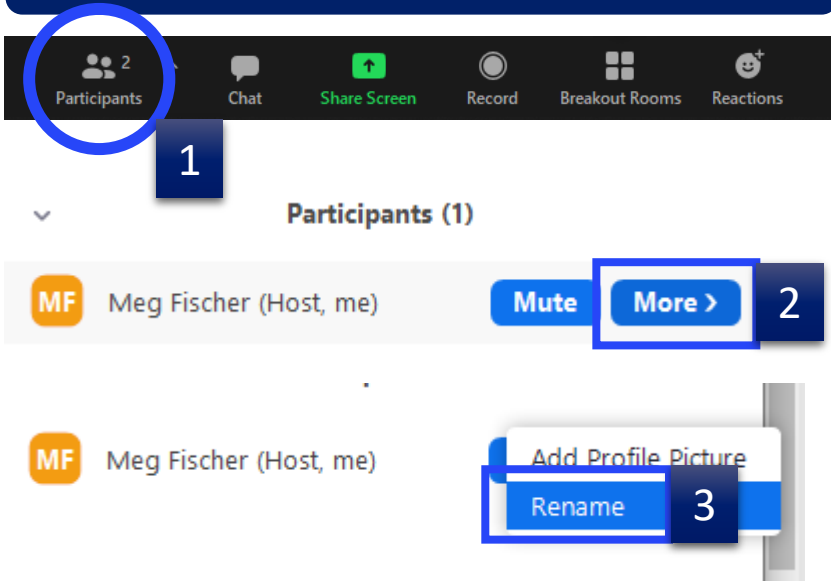
Zoom Essentials for ECHO



Please Rename Yourself

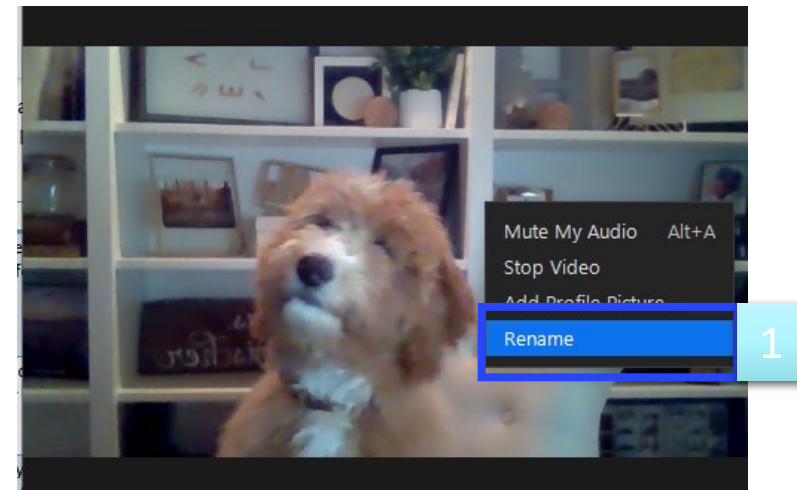
- **First, Last Name, Organization**
- *Example: Molly Black, ACS*

Option 1



Option 2

Right-click on your video tile



This project is being funded by



Every cancer. Every life.



MERCK



Have a question? Don't wait to ask! Feel free to enter in the Chat at any time.

Today's Agenda

- 1 Welcome & Housekeeping**
7 minutes
- 2 Introductions:** Hub Team, SMEs, & Participant Sites
13 minutes
- 3 What Did We Get Ourselves Into?** Project Need, Goals, Design, Data, & Timeline
10 minutes
- 4 How to ECHO:** Introduction to the ECHO Model
15 minutes
- 5 Case Presentations:** Modeling, Discussion, & Sign-up
15 minutes
- 6 Wrap Up**
5 minutes



Welcome Message Prostate Cancer Screening IMPACT ECHO

Laura Makaroff, DO
Senior Vice President, Cancer
Prevention

Today's Learning Objectives

By the end of our session you will be able to:

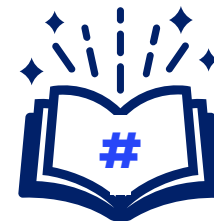
1. Identify and relate to our ECHO's Participating Sites, Subject Matter Experts and ACS ECHO team members.
2. Describe elements of the Prostate Cancer Screening IMPACT ECHO that maintain fidelity to the proven Project ECHO model.
3. Give examples of potential case presentation topics.
4. Report the C-SASI data collection tool was accessed by your system.



**2024 Prostate Cancer
Screening IMPACT ECHO**
ECHO Guide | January 2024

This document is an overview and “how to” guide for individuals engaged in the Prostate Cancer Screening IMPACT ECHO program.

The primary users of this guide include the Participant Sites (participating FQHCs and Safety-net Primary Care Centers), ACS regional team members supporting these health systems, and ECHO subject matter experts.



This indicates the page within the ECHO Guide where you can find content we are covering in orientation.



Session 0

ECHO Hub Team, Subject Matter Expert (SME) & Participant Site Introductions

Molly Black

Director, Screening
American Cancer Society



Introductions

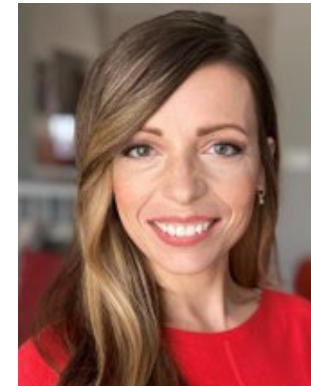
Meet Our Prostate Cancer Screening IMPACT ECHO HUB



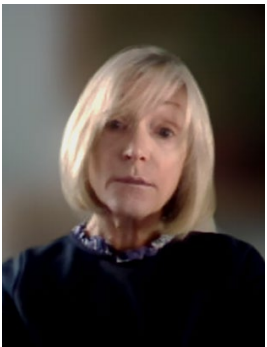
Molly Black
Director, Screening
American Cancer Society
**ACS ECHO Program Lead
& ECHO Facilitator**



Jennifer McBride, PhD
American Cancer Society
**Sr Mgr. Data & Evaluation,
Project ECHO**



Mindi Odom
American Cancer Society
Director, Project ECHO



**Beth Graham,
MPH, CHES**
American Cancer Society
**Program Manager,
Project ECHO**



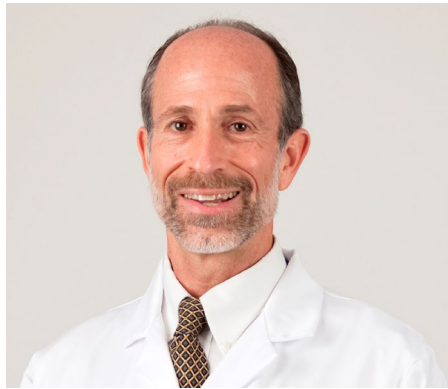
Allison Rosen, MS
American Cancer Society
Director, Project ECHO



**Beth Dickson-Gavney,
MS, MA**
American Cancer Society
Senior Director, Project ECHO

Introductions

Meet Our Prostate Cancer Screening IMPACT ECHO HUB – Subject Matter Experts (SMEs)



**Andrew M.D. Wolf,
MD, MACP**
Professor, Internal Medicine
**University of Virginia,
School of Medicine**



**Quoc-Dien Trinh,
MD, MBA**
Chief of Urology
**Brigham and Women's Faulkner
Hospital**



**William H. Boykin, Jr,
MD**
Urology Specialist
**UK King's Daughters
Medical Center**



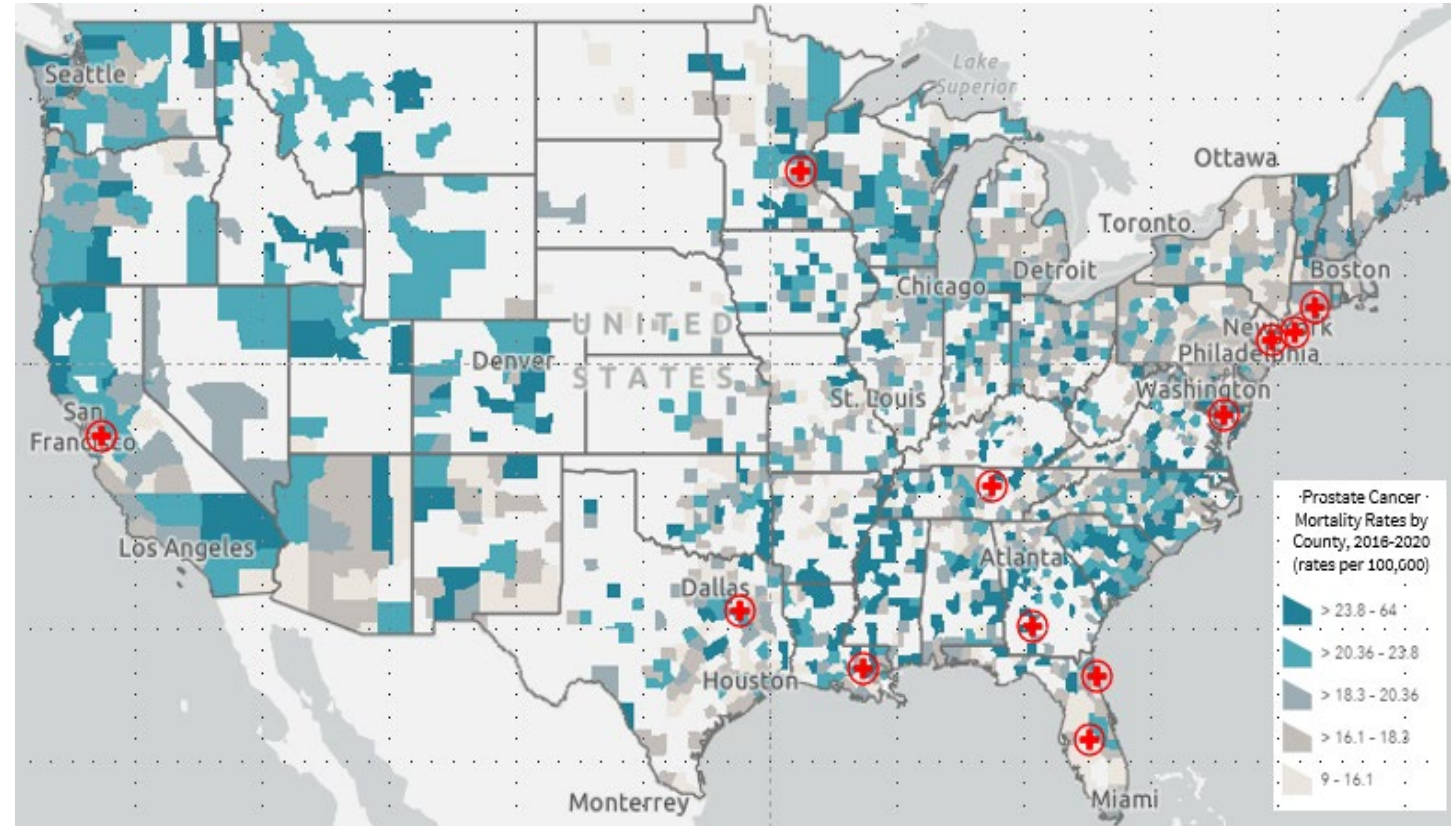
**Yaw A. Nyame,
MD, MS, MBA**
Assistant Professor,
Director of Urology
**Fred Hutch at University
of Washington**

2024 Prostate Cancer Screening IMPACT ECHO

Primary Care Participant Sites



Health System	City	State
Agape Family Health	Jacksonville	FL
Albany Area Primary Health Care, Inc.	Albany	GA
BMS Family Health and Wellness Centers	Brooklyn	NY
CareSouth Medical & Dental	Baton Rouge	LA
Central Florida Health Care, Inc.	Winter Haven	FL
Cornell Scott-Hill Health Corporation	New Haven	CT
Family Circle of Care	Tyler	TX
Greater Baden Medical Services, Inc.	Brandywine	MD
Nashville Healthcare Center	Nashville	TN
North Hudson Community Action Corporation	Jersey City	NJ
Roots Community Health Center	San Jose	CA
Southside Community Health Services	Minneapolis	MN



Collectively, these 12 systems provided primary care to **over 40,000** male patients aged 45-74 in 2022.



Welcome Agape Family Health

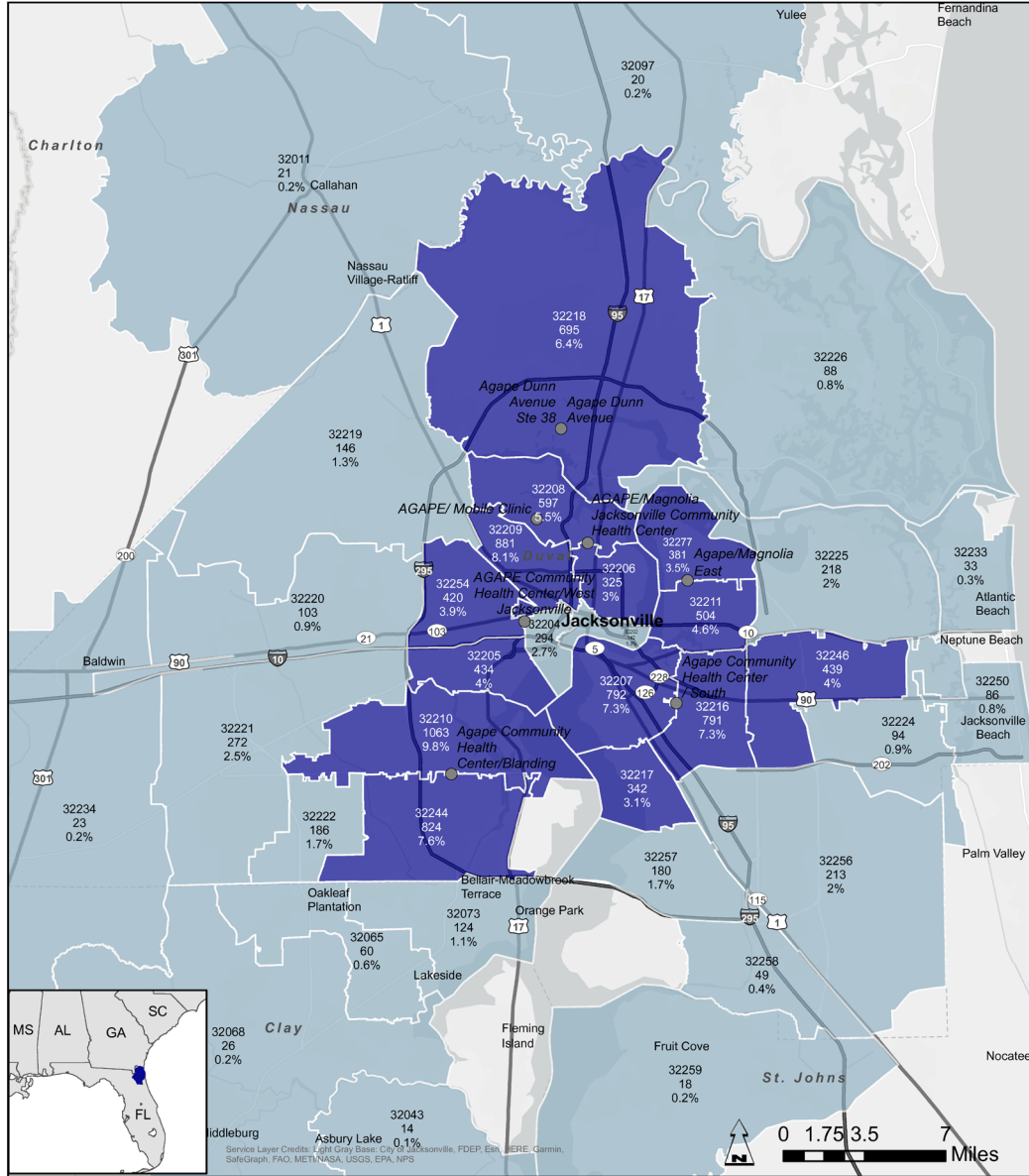
Jacksonville, FL



AGAPE
FAMILY HEALTH

AGAPE COMMUNITY HEALTH CENTER, INC.

Patients Served by Grantee
(Within mapped Areas):
10,898



Cumulative % Grantee Patient Origin by Zip Code Tabulation Area (ZCTA)

- Cumulative to 75%
- Cumulative 75%-100%
- Delivery Sites

ZCTA Label Key

Example Values	ZCTA Number	% of Patients from ZCTA
12345	12345	12%
1,234	1,234	12%

Source: Uniform Data System, Bureau of Primary Health Care, 2022

Welcome Albany Area Primary Health Care, Inc.

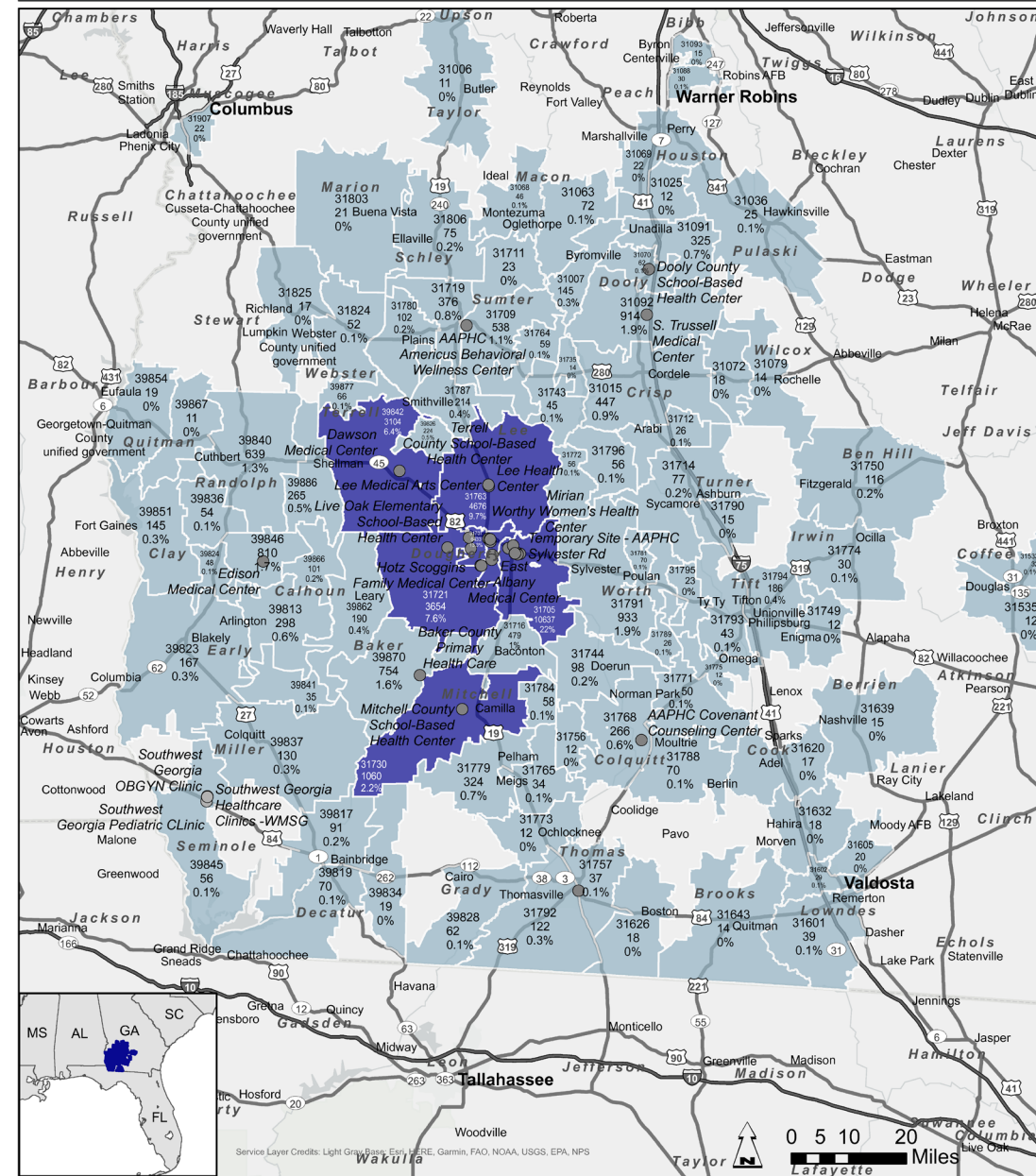
Albany, GA



AAPHC
Albany Area
Primary Health Care

ALBANY AREA PRIMARY HEALTH CARE, INC.

Patients Served by Grantee
(Within mapped Areas):
48,308



Cumulative % Grantee Patient Origin by Zip Code Tabulation Area (ZCTA)

- Cumulative to 75%
- Cumulative 75%-100%
- Delivery Sites

Example ZCTA Label Key

- 12345 - ZCTA Number
- 1,234 - Patients in ZCTA
- 12% - % of Patients from ZCTA

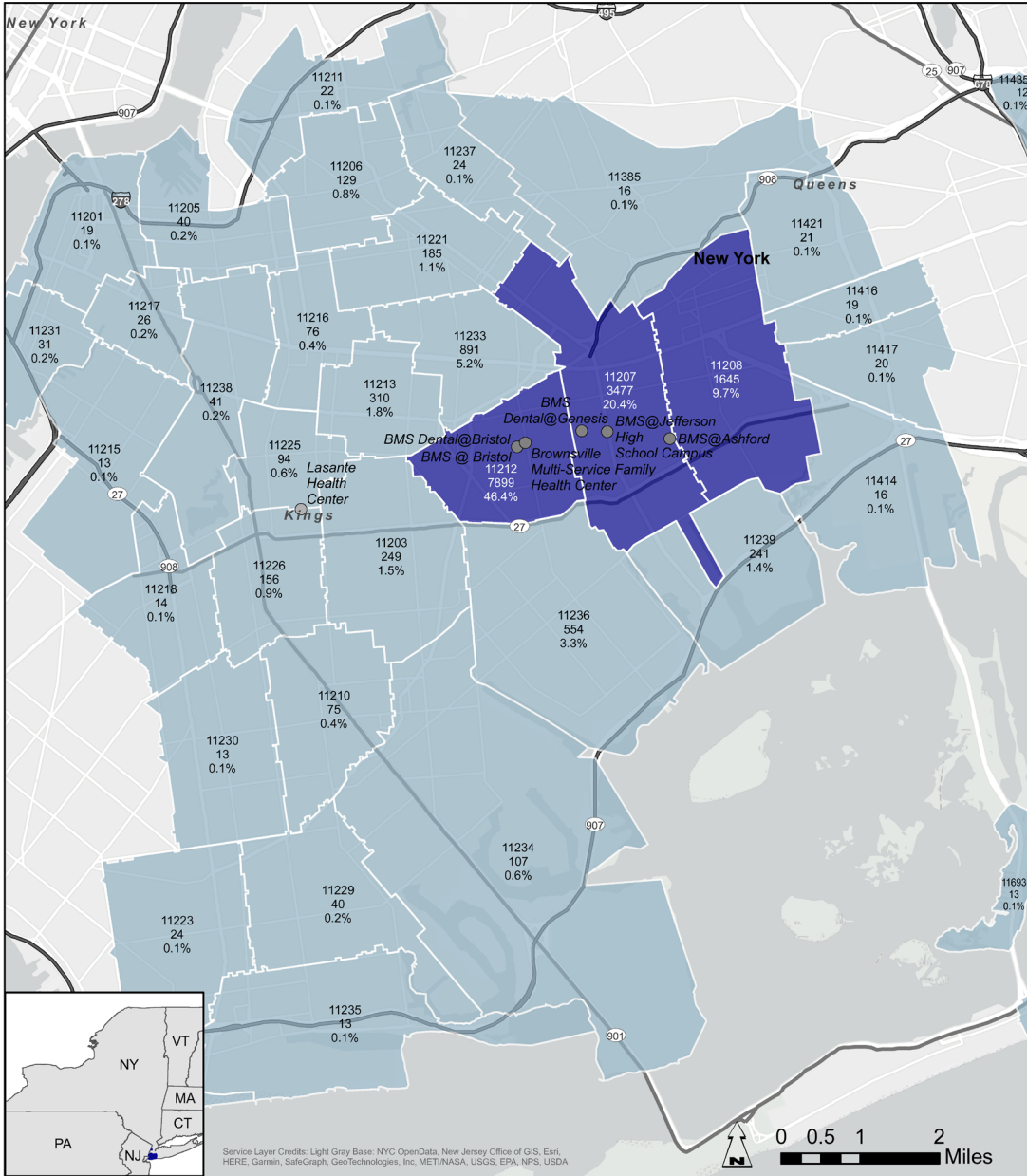
Source: Uniform Data System, Bureau of Primary Health Care, 2022

Welcome BMS Family Health and Wellness Centers

Brooklyn, NY



BMS Family Health & Wellness Centers



Cumulative % Grantee Patient Origin by Zip Code Tabulation Area (ZCTA)

- Cumulative to 75%
- Cumulative 75%-100%
- Delivery Sites

Example Values

12345	- ZCTA Number
1,234	- Patients in ZCTA
12%	- % of Patients from ZCTA

Source: Uniform Data System, Bureau of Primary Health Care, 2022

Welcome CareSouth Medical & Dental

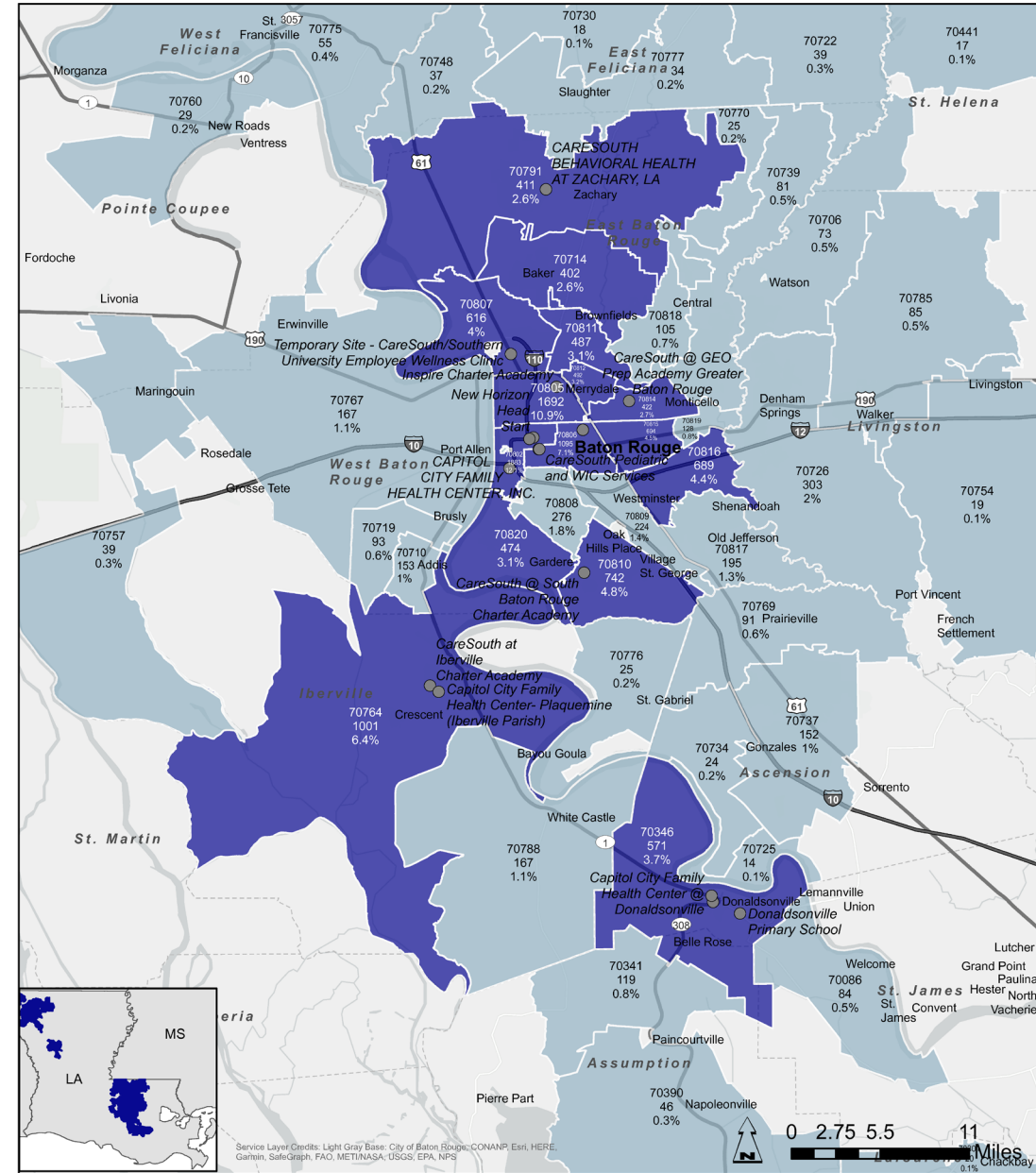
Baton Rouge, LA



CareSouth
MEDICAL & DENTAL

CAPITOL CITY FAMILY HEALTH CENTER, INC., DBA CARE SOUTH

Patients by Grantee
(Within mapped Areas):
15,521



Cumulative % Grantee Patient Origin by Zip Code Tabulation Area (ZCTA)

- Cumulative to 75%
- Cumulative 75%-100%
- Delivery Sites

ZCTA Label Key

- 12345 - ZCTA Number
- 1,234 - Patients in ZCTA
- 12% - % of Patients from ZCTA

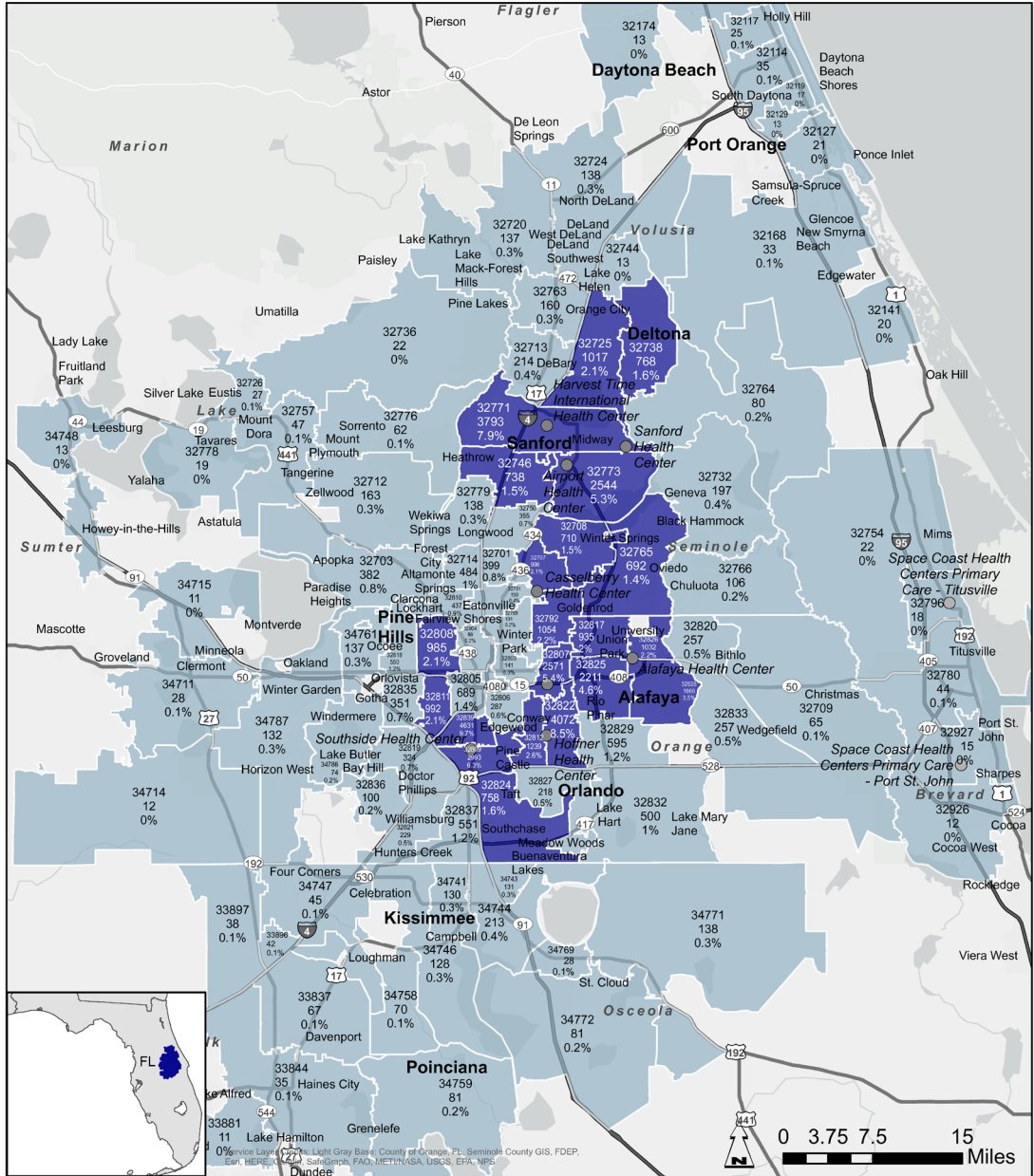
Source: Uniform Data System, Bureau of Primary Health Care, 2022

Welcome Central Florida Health Care, Inc.

Winter Haven, FL



Central Florida Health Care



Cumulative % Grantee Patient Origin by Zip Code Tabulation Area (ZCTA)

- Cumulative to 75%
- Cumulative 75%-100%
- Delivery Sites

Example Values

12345	- ZCTA Number
1,234	- Patients in ZCTA
12%	- % of Patients from ZCTA

ZCTA Label Key

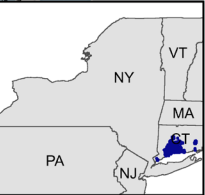
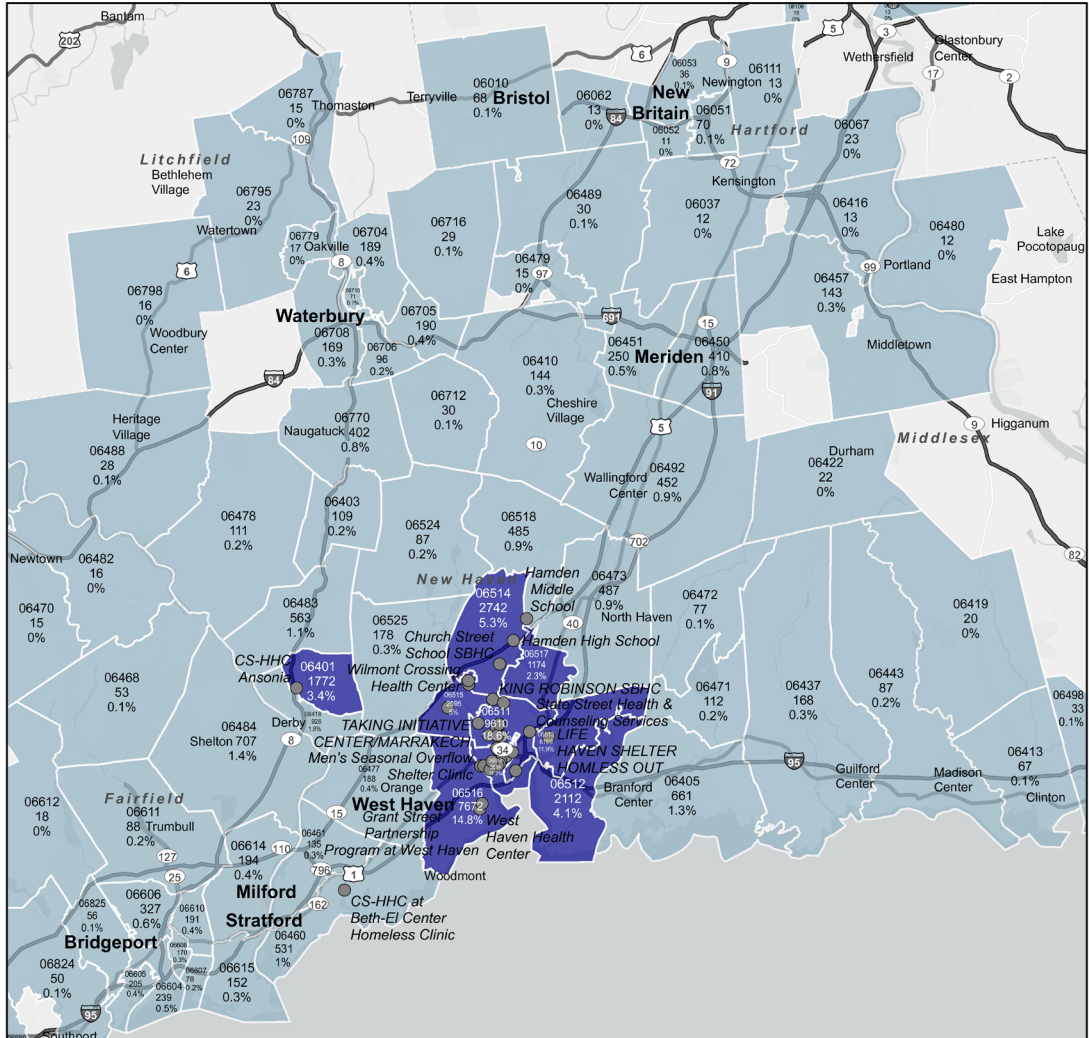
Source: Uniform Data System, Bureau of Primary Health Care, 2022

Welcome Cornell Scott-Hill Health Corporation

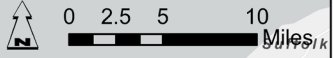
New Haven, CT



Cornell Scott Hill Health Center



Service Layer Credits: Light Gray Base: Esri, HERE, Garmin, SafeGraph, FAO, METI/NASA, USGS, EPA, NPS



Cumulative % Grantee Patient Origin by Zip Code Tabulation Area (ZCTA)

- Cumulative to 75%
- Cumulative 75%-100%
- Delivery Sites

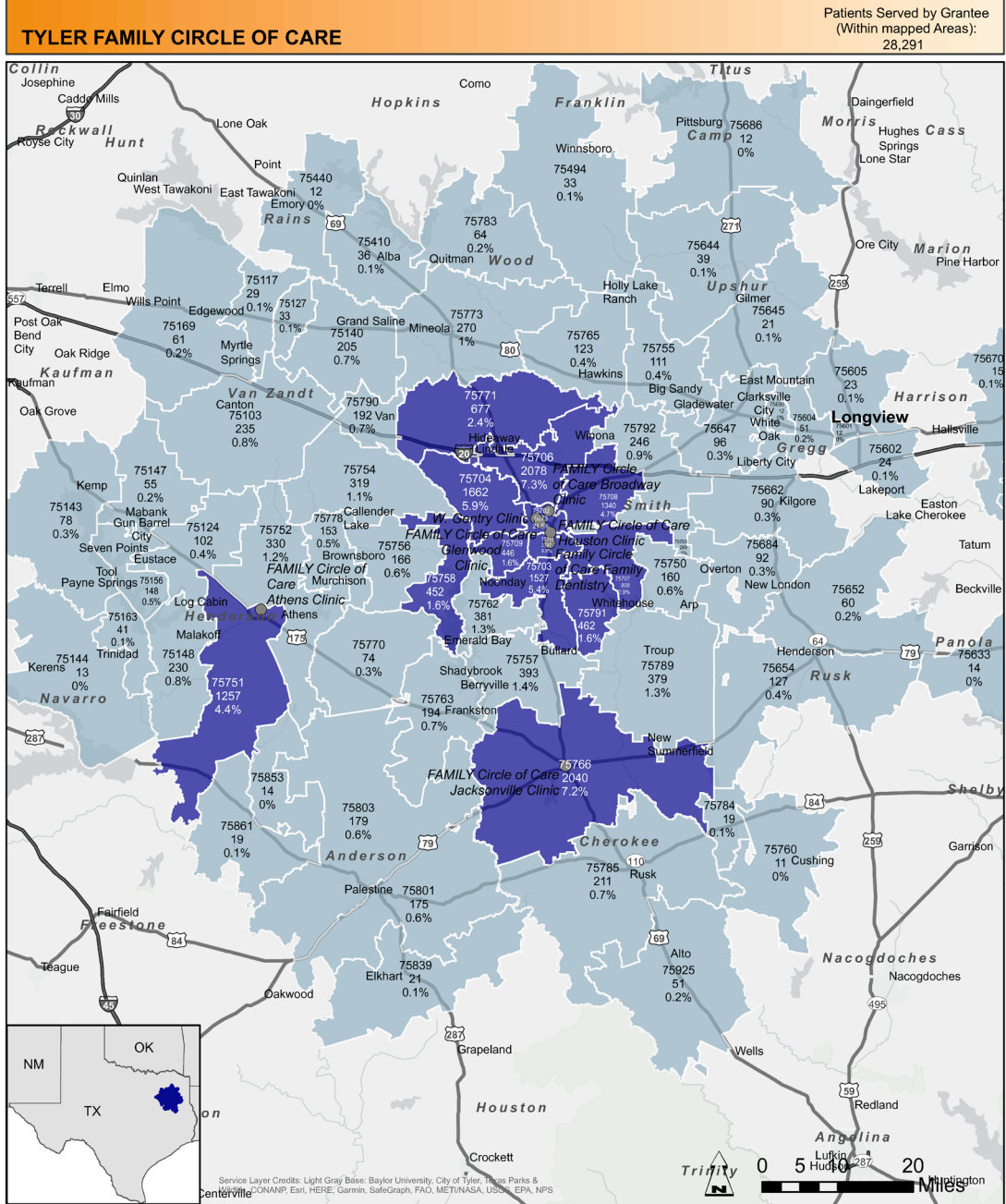
ZCTA Label Key

Example Values: 12345 - ZCTA Number
 1,234 - Patients in ZCTA
 12% - % of Patients from ZCTA

Source: Uniform Data System, Bureau of Primary Health Care, 2022

Welcome Family Circle of Care

Tyler, TX



Cumulative % Grantee Patient Origin by Zip Code Tabulation Area (ZCTA)

- Cumulative to 75%
- Cumulative 75%-100%
- Delivery Sites

ZCTA Label Key

Example Values:

- 12345 - ZCTA Number
- 1,234 - Patients in ZCTA
- 12% - % of Patients from ZCTA

Source: Uniform Data System, Bureau of Primary Health Care, 2022

Welcome Greater Baden Medical Services, Inc.

Brandywine, MD

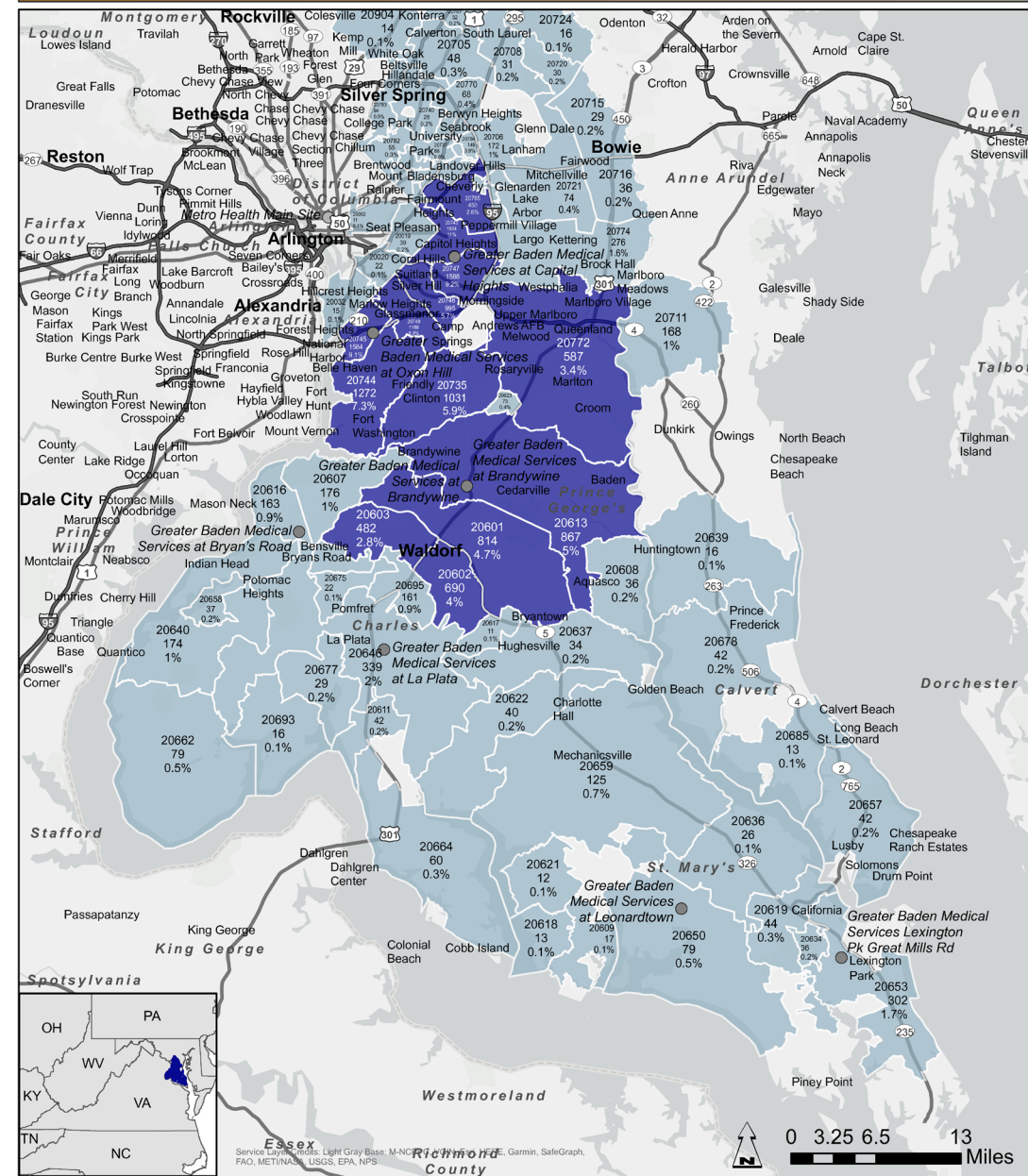


GREATER BADEN MEDICAL SERVICES

Primary and Preventive Health Care

GREATER BADEN MEDICAL SERVICE INC

Patients Served by Grantee (Within mapped Areas): 17,337



Cumulative % Grantee Patient Origin by Zip Code Tabulation Area (ZCTA)

- Cumulative to 75%
- Cumulative 75%-100%
- Delivery Sites

ZCTA Label Key

Example Values: 12345 - ZCTA Number
 1,234 - Patients in ZCTA
 12% - % of Patients from ZCTA

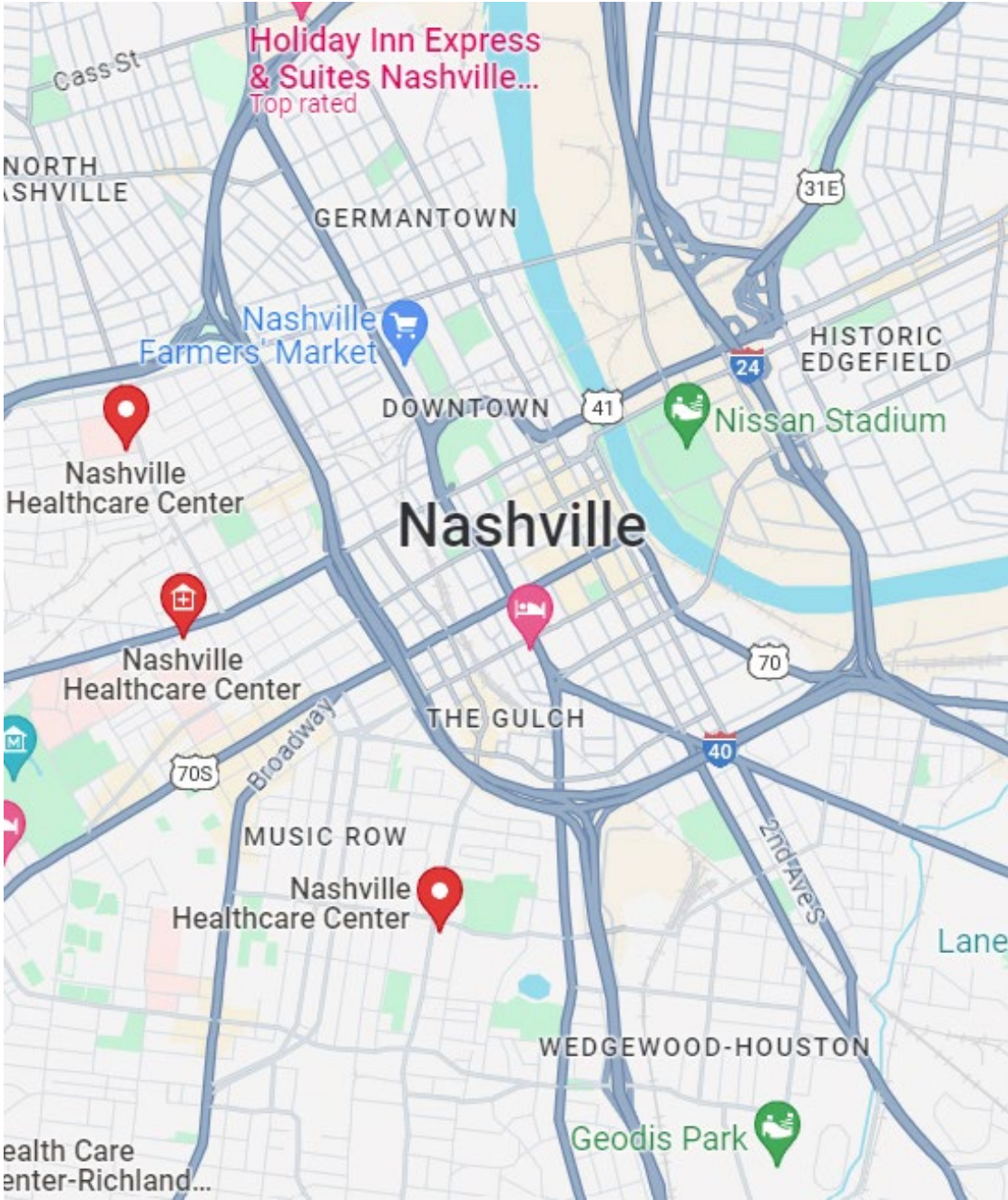
Source: Uniform Data System, Bureau of Primary Health Care, 2022

Welcome Nashville Healthcare Center

Nashville, TN



Nashville Healthcare Center



Welcome North Hudson Community Action Corporation

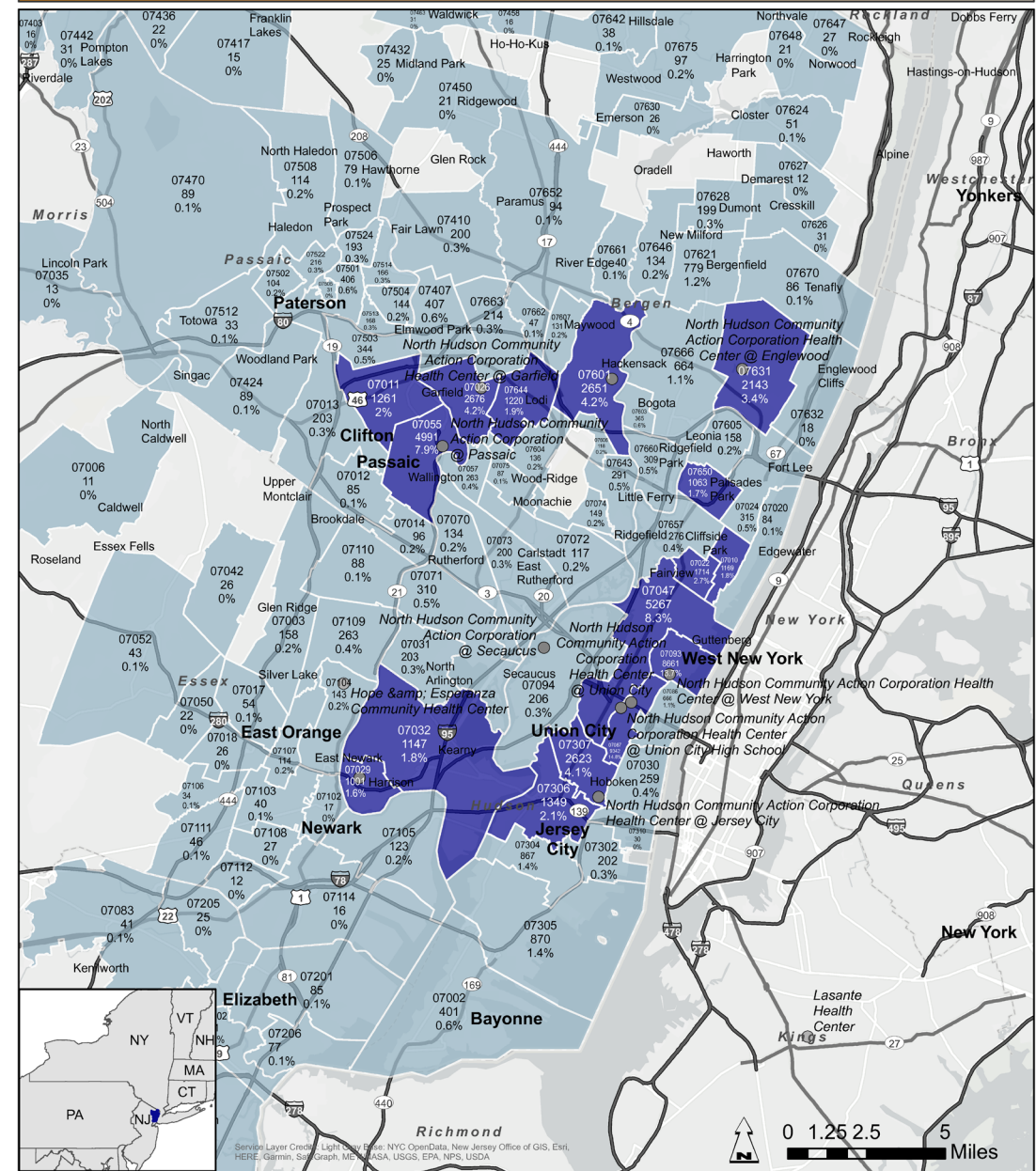
Jersey City, NJ



NORTH HUDSON
COMMUNITY ACTION CORPORATION

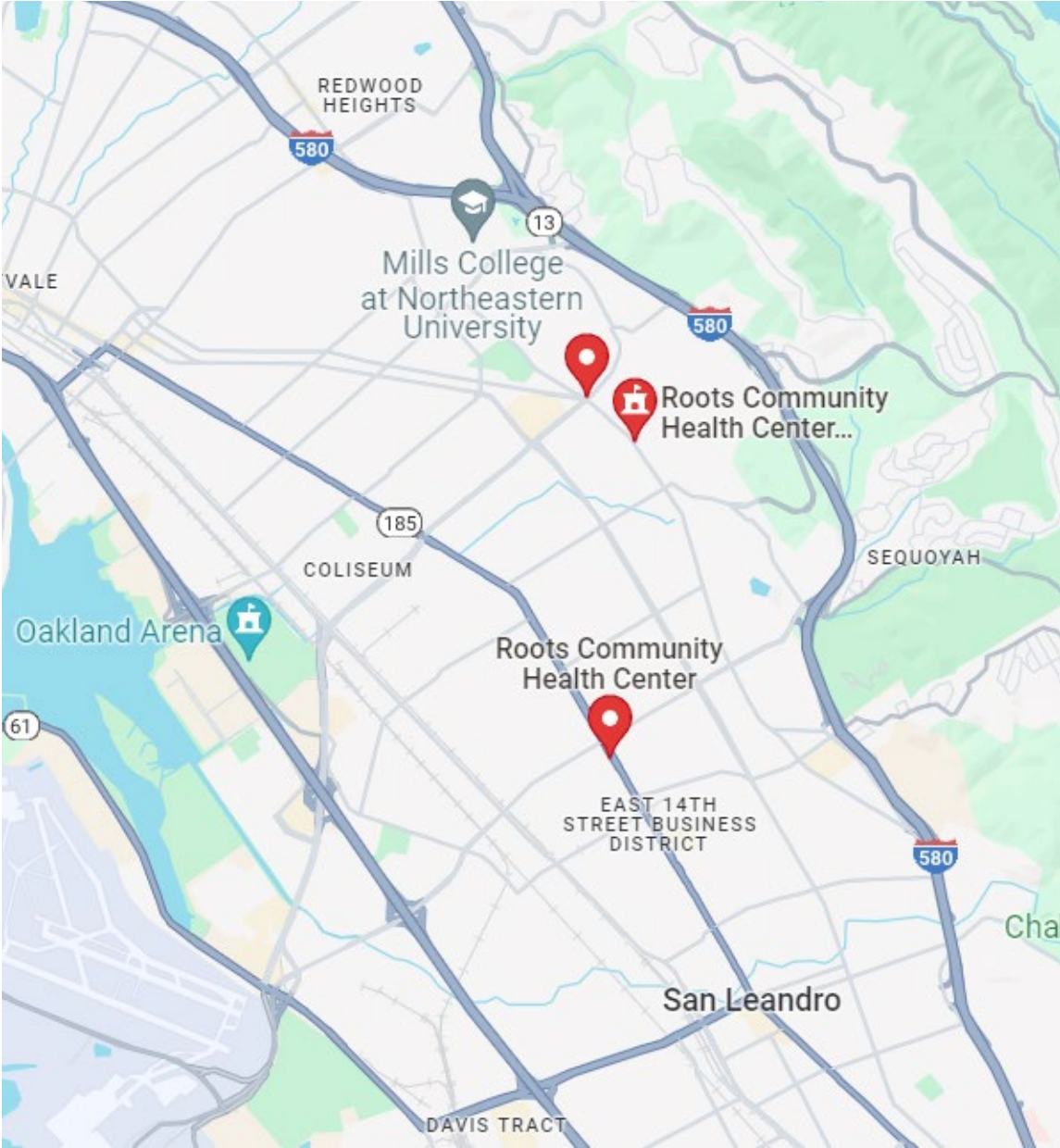
NORTH HUDSON COMMUNITY ACTION CORPORATION

Patients Served by Grantee
(Within mapped Areas):
63,222



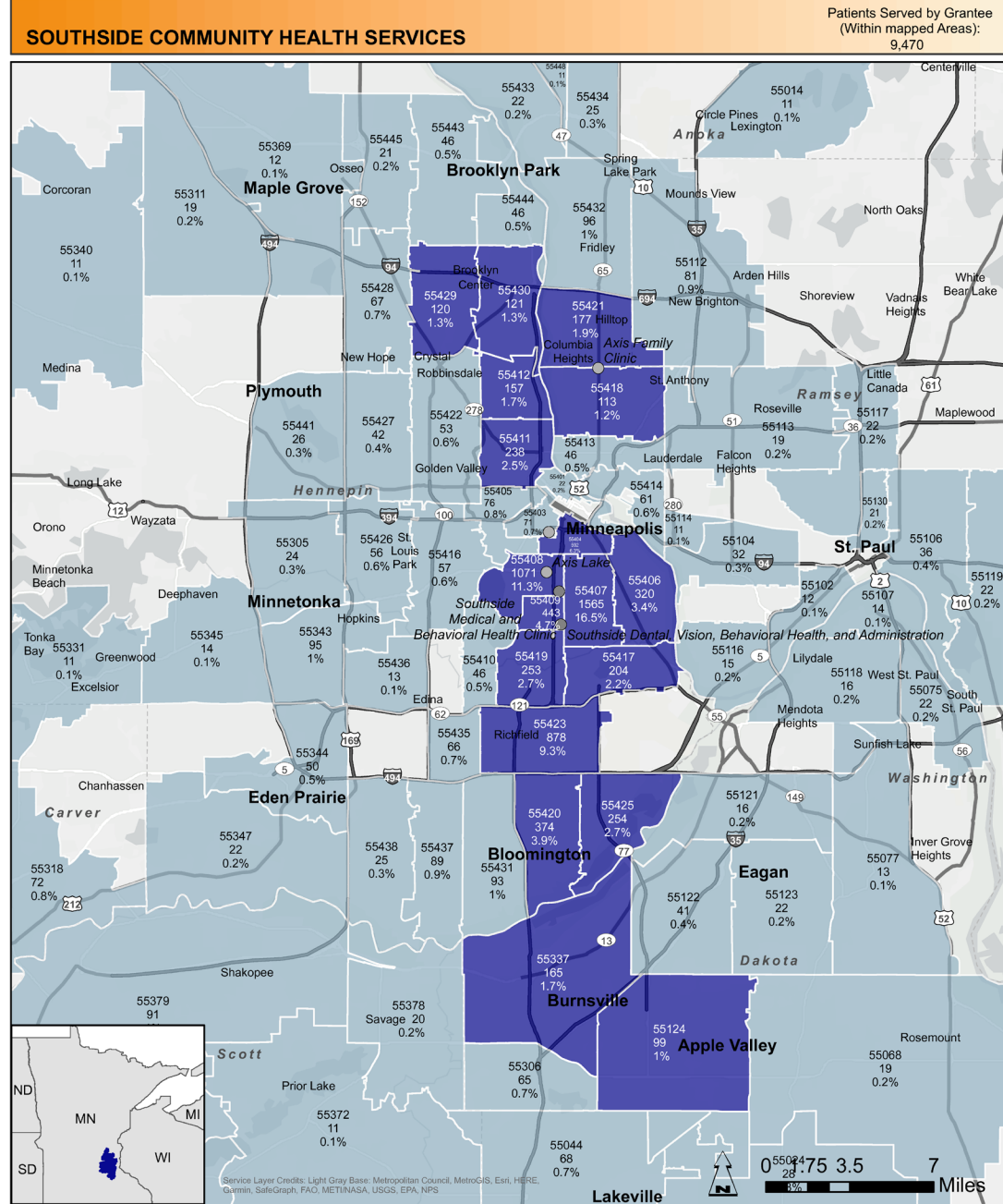
Welcome **Roots Community Health Center**

Oakland, CA



Welcome Southside Community Health Services

Minneapolis, MN



Cumulative % Grantee Patient Origin by Zip Code Tabulation Area (ZCTA)

- Cumulative to 75%
- Cumulative 75%-100%
- Delivery Sites

Example Values

12345	- ZCTA Number
1,234	- Patients in ZCTA
12%	- % of Patients from ZCTA

Source: Uniform Data System, Bureau of Primary Health Care, 2022

What Did We Get Ourselves Into?

Project Need, Goals,
Design, Data, & Timeline



The Need



An estimated **288,300** new cases of prostate cancer will be diagnosed, and about **34,700** people will die from prostate cancer in 2023.¹



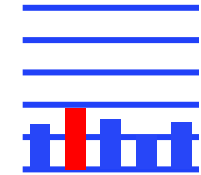
2nd leading cause of cancer death in U.S. men, **+3%** per year, 2014-2019, after two decades of decline.¹



Diagnosis of advanced-stage prostate cancer has increased **4%-5%** annually.¹



2.1x higher likelihood of death in Black men versus White men²



Only **35%** of men 50 years and older received a PSA test in the past year and only **31%** of Black men and **28%** of Hispanic men in 2021.³

¹ American Cancer Society. [Cancer Facts & Figures 2023](#). Atlanta: American Cancer Society; 2023 ² [Cancer Facts & Figures for African American/Black People 2022-2024](#). Atlanta: American Cancer Society, Inc. 2022. ³ [Cancer Prevention & Early Detection Facts & Figures 2023-2024](#). Atlanta: American Cancer Society; 2023-2024.

Cancer Prevention and Early Detection: Facts & Figures 2023–2024

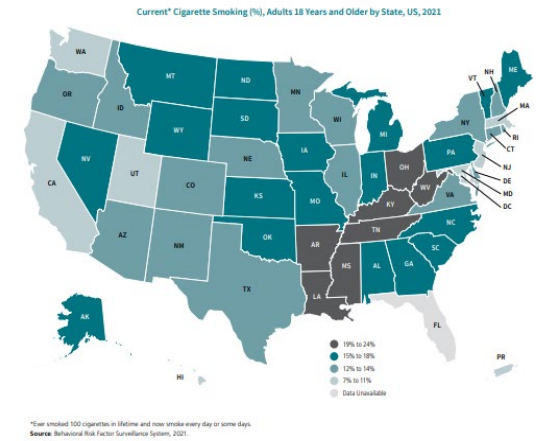
Prostate Specific Antigen Test* (%), Men 50 Years and Older, US, 2021

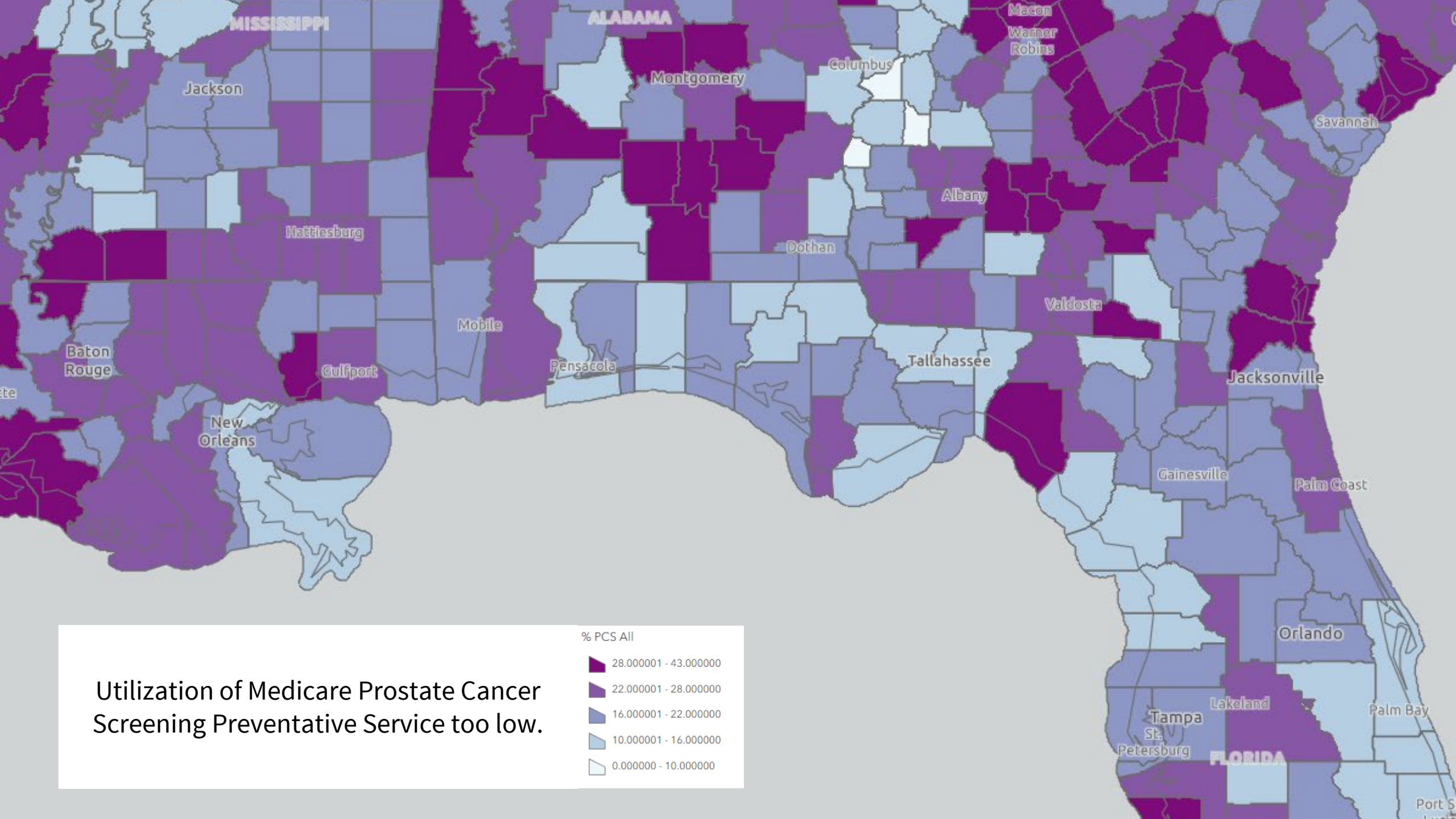
	Within the past year
Overall	35
Age (years)	
50-64	26
65+	46
Race/Ethnicity	
Hispanic	28
White only	38
Black only	31
Asian only	21
AIAN only or multiple	29
Sexual orientation	
Gay	40
Straight	35
Bisexual	†
Immigration status	
Born in US/US Territory	37
In US fewer than 10 years	†
In US 10+ years	27

	Within the past year
Education	
Less than high school	21
High school diploma	32
Some college	37
College graduate	41
Income level	
<100% FPL	22
100 to <200% FPL	24
≥200% FPL	39
Insurance status	
Uninsured	10
Private	36
Medicaid/Public/Dual eligible	19
Medicare (ages ≥65 years)	44
Other	39

FPL: federal poverty level. *Among men who have not been diagnosed with prostate cancer. †Estimates are statistically unstable. Please see Special Notes on page 68.

Cancer Prevention & Early Detection Facts & Figures 2023-2024





% PCS All

- 28.000001 - 43.000000
- 22.000001 - 28.000000
- 16.000001 - 22.000000
- 10.000001 - 16.000000
- 0.000000 - 10.000000

Utilization of Medicare Prostate Cancer Screening Preventative Service too low.

Goals

Together with our Primary Care Participant Sites and Subject Matter Experts using the ECHO's all-teach, all-learn approach, we aim to:

- 1 **Increase** appropriate prostate cancer screening.
- 2 **Increase** utilization of prostate cancer shared decision-making tools by primary care teams.
- 3 **Increase** relationships and streamline referral pathways with urologists/other specialty providers within the medical neighborhood.
- 4 **Increase** data capacity to:
 - risk stratify patients,
 - track shared decision-making process,
 - track PSA results and identify trends, and
 - collect and utilize data for pre-biopsy risk calculator and/or referral to specialty care.



What is expected of Primary Care Participant Sites?

- 1 **Build** a small multidisciplinary ECHO team including a combination of clinic/system team members
- 2 **Join** each monthly 60-minute ECHO session with 3 or more team members and participate in discussion with video on
- 3 **Submit** and deliver at least one case presentation over the course of the ECHO series
- 4 **Integrate** tools, strategies and processes learned into your clinical practice
- 5 **Utilize** grant funds (within established parameters) to support systems change within your setting to meet our shared goals
- 6 **Submit** data collection forms, surveys, and assessments on or before due dates



Prostate Cancer Screening Capacity Building Grant



Participant sites receive a \$20,000 Prostate Cancer Screening Capacity Building Grant **to support meeting the goals of this ECHO**. Each selected Participant Site has an executed Grant Agreement and should refer to their individual scope of work and budget.

Permitted Expenses: 100% of the grant funds shall be used to support:

- active participation in all ECHO sessions
- integration of tools, strategies, and learnings from this ECHO into clinical practice
- data collection, utilization, and reporting



Didactic Topics



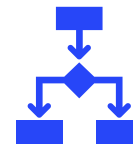
The Science of Prostate Cancer Screening: Risks, Benefits, and Strategies to Reduce Overdiagnosis and Overtreatment



Increasing relationships and streamlined referral pathways with urologists within the medical neighborhood



Informed Decision-Making, Effective Conversations and Decision Aids with Focus on Black/ African American Patients



Utilizing data for pre-biopsy risk calculation and/or referral to urology



Addressing Implicit Bias within Primary Care to Improve Patient Provider Engagement



Tailoring screening frequency and using/navigating patients to secondary tests before and after biopsy



Utilizing data to risk stratify patients, track SDM, and track PSA results and trends



Managing/co-managing treatment strategies including active surveillance.



Data & Evaluation

Data and evaluation will:

- inform those apart of the project on both system and programmatic level practices
- improve futures initiatives in prostate cancer screening



Data Collection Tool	Completed By
ECHO Session Polls and Surveys	Each participant site team member
Pre-ECHO Series Assessment	Each participant site team member
Capacity, Systems and Strategies Inventory (C-SASI) - Baseline	Each system
Mid Program Progress & Grant Spend Update	Each system
Post- ECHO Series Assessment	Each participant site team member
Final C-SASI and Grant Spend Report	Each system
6 Month Post-ECHO Series Assessment	Each participant site team member

Curriculum Topics for Didactic Component		Health System Activity	Data & Reporting
2024	JAN 1/16/2024 Session 0: ECHO Orientation – ECHO Hub Team & Participant Introductions, Project Goals, Intro to the ECHO Model	Attend monthly ECHO session. Prepare, submit, and deliver one case presentation. Integrate tools, strategies, and learnings into clinical practice. Increase data capacity, complete, and submit data and reports.	
	FEB 2/20/2024 Session 1: The Science of Prostate Cancer Screening: Risks, Benefits and Strategies to Reduce Overdiagnosis and Overtreatment		Pre-ECHO Assessment Due: <i>On or before 2/16/2024</i> Baseline C-SASI Due: <i>on or before 2/21/2024</i>
	MAR 3/19/2024 Session 2: Informed Decision Making, Effective Shared Decision-Making Conversations and Decision Aids with Focus on Black and African American Patients		
	APR 4/16/2024 Session 3: Addressing Implicit Bias within Primary Care to Increase Efficacy of Patient & Health Care Team Engagement		
	MAY 5/21/2024 Session 4: Utilizing data to risk stratify patients, track SDM, and track PSA results and trends		
	JUNE 6/18/2024 Session 5: Increasing relationships and streamlined referral pathways with urologists within the medical neighborhood		
	JULY 7/16/2024 Session 6: Utilizing data for pre-biopsy risk calculation and/or referral to urology.		Mid-Program Progress and Grant Spend Update Due: <i>on or before 7/31/2024</i>
	AUG 8/20/2024 Session 7: Tailoring screening frequency and using/navigating patients to secondary tests before and after biopsy.		
	SEPT 9/17/2024 Session 8: Managing/co-managing treatment strategies including active surveillance.		
	OCT NOV DEC		Apply strategies and learnings from ECHO sessions into clinical practice





How to ECHO: Introduction to the ECHO Model

Beth Dickson-Gavney, MS
Senior Director, Project ECHO
American Cancer Society



Today's Session will **NOT** serve as a typical ECHO session but instead will function more like a traditional interactive webinar.

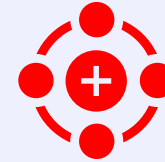
About Project ECHO

- **Moving Knowledge, Not People**
- Empowering people to make a difference in their communities with the **right knowledge**, at the **right place**, at the **right time**
- Builds **communities of practice** through **virtual mentoring & learning**
- **One-to-many** intervention proven effective to reduce disparities, strengthen health systems, & drive collaborative solutions for local priorities
- **Effective/Efficient** vehicle for dissemination of evidence-based strategies to improve cancer outcomes
- Participants **attend virtual case-based sessions** with subject-matter experts
- The participants and subject-matter experts all learn from each other: knowledge is generated, refined and tested by local experience. This “**all teach, all learn**” method **democratizes expertise** and makes it relevant to local cultural contexts.

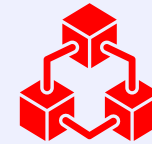
ECHO is all teach, all learn



Interactive



Co-management of cases



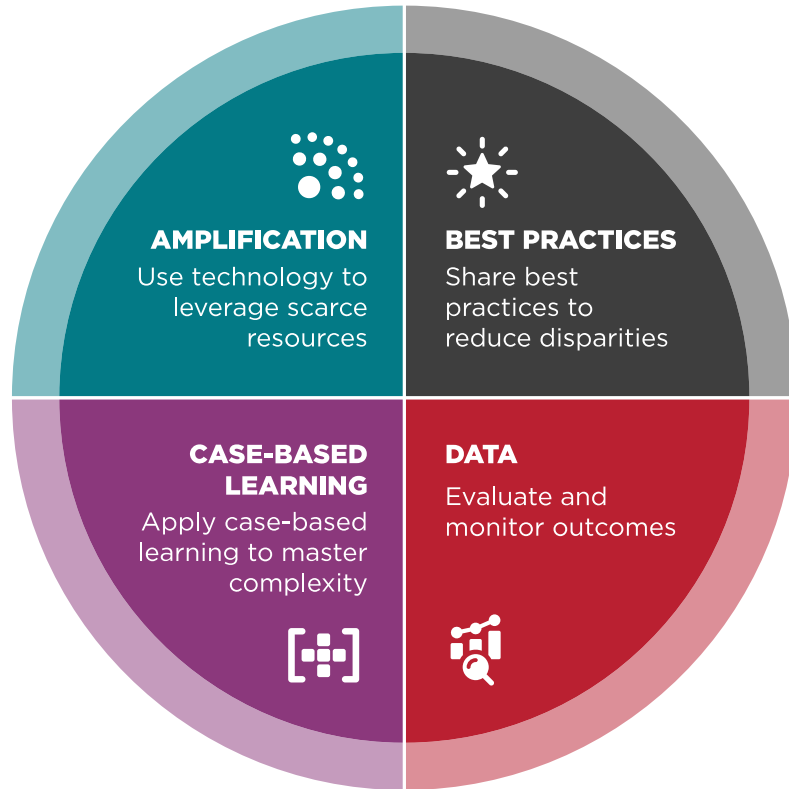
Peer-to-peer learning



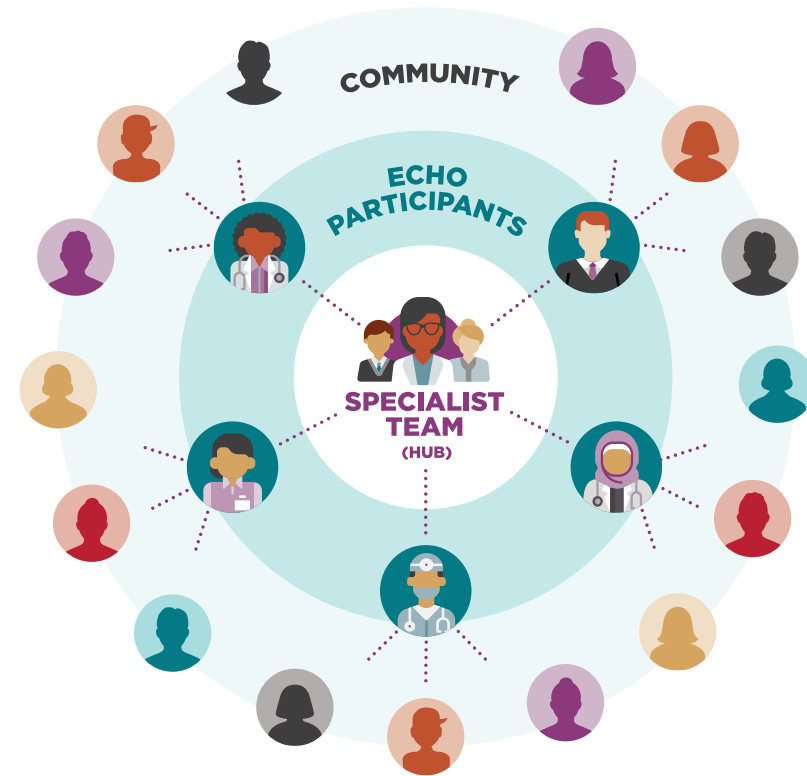
Collaborative problem solving

The American Cancer Society serves as a **Project ECHO** (Extension for Community Healthcare Outcomes) Hub

The ECHO Model



All Teach, All Learn



! For more about the **ECHO Model** or **Project ECHO**, please visit <https://projectecho.unm.edu>

What to Expect: The Anatomy of an ECHO

1. **Welcome & introductions** (5 minutes)
2. **Announcements & session overview** (5 minutes)
3. **Brief Didactic Lecture/Presentation** (10-15 minutes at most)
4. **Didactic Q/A** (5 minutes)
5. **Case Presentation(s)** (25 minutes total)
 - **Case Presentation** (3 -5 minutes)
 - **Clarifying Questions** – (5 minutes)
 - **Recommendations** – (15 minutes)
6. **Closing remarks, Wrap-Up & Session Survey Poll** (5 min)

Expectations of Participating Learning Sites

During the ECHO Sessions

- Join each monthly, 60-minute ECHO session (participate in discussion with video on)
- We need volunteers, each willing to present one **3-5-minute** case presentation
- Complete polls and surveys

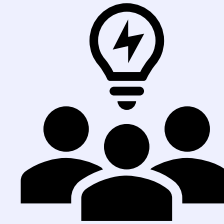


Clinical team partners are the **heart** of this ECHO. Your experiences, questions, and engagement are essential for the success of the program.
PLEASE be **on camera**, **ask questions**, and **offer suggestions**.

Case Presentation Overview



- Making case presentations & offering colleagues feedback on case presentations is a key component of the ECHO model.
- We are asking YOU to submit cases for discussion.
- The case presentation is based on real-life patient or system-level cases about prostate cancer screening.
- The topic of your case presentation does not have to align with the didactic topic being presented that session.



Subject matter experts (SMES) and participant learners will offer their guidance. This section of each ECHO session serves as an interactive learning feedback look for all attendees.

Patient Case Presentation Form Questions

- Patient Age
- Patient Sex
- Patient Race and Ethnicity
- Past Medical/Surgical History
- Past Cancer Screening History
- Medications
- Family History
- What strategies or actions have you tried so far?
- What is your main question about this case?

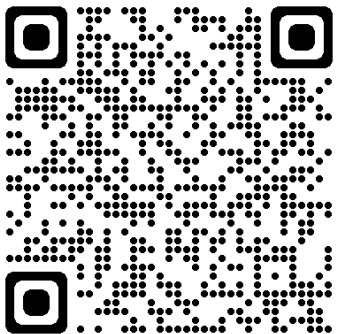
System/Workflow Case Presentation Form Questions

- 1. What is the system or workflow that you are trying to improve or solve?**
e.g. utilization of SDM tool, EHR data utilization, referral to urologist, etc.
- 2. Describe how it is currently working.** Include details relevant to your case presentation. e.g. who does the work, what are the pain points, etc.
- 3. Briefly describe your vision of what it will look like when it is working well.** Include any ideas you had about how to approach the redesign.
- 4. Have there any recent changes (less than 6 months) made to this system or workflow?** Describe the changes, when they were made, and impact (successes and challenges)
- 5. What data (quantitative, qualitative) do you have to augment your observations?**

Process for Submitting Your Case Presentation



- Please submit *Case Presentation Form* at least 2 weeks prior to session.
- To **submit** your *Case Presentation Form*, click [here](#) or scan QR Code.
- You will need to upload a high-resolution headshot photo for the slide deck along with a brief bio for your introduction.



Case Presentation Form

ACS Prostate Cancer Screening IMPACT ECHO

This form includes 3 sections: Presenter Information, Patient Case Information, and System/Workflow Case Information.

*Choose either a Patient or System/Workflow case for your case presentation.

*We approximate each case presentation will be 5 minutes.

*Please be sure not to include patient identifiers on this form or use any identifiers during the presentation.

*Sample Case Presentations: [create folder and insert link]

Presentation Date*

mm/dd/yyyy

Presenter Prefix *

(e.g. Mr, Mrs, Ms, Dr, etc.)

Presenter Full Name(s)*

(as you wish it to appear on the PPT Presentation)

Presenter Credentials

(as you wish them to appear on the PPT Presentation)

Presenter Pronouns

(optional)

Presenter Title(s)*

(as you wish to appear on the PPT Presentation)



Session 0

Case Presentation

Molly Black
Director, Screening
American Cancer Society



Session 0: Modeling a Systems-Level Case Presentation

Andrew Wolf, MD, MACP
Professor, Internal Medicine
University of Virginia School of
Medicine

System/Workflow Case Presentation

Presented By: Andrew M.D. Wolf, MD | University of Virginia Health System



System: Improve the process of shared decision making for prostate cancer screening in our clinic

Current Process	Vision
<ul style="list-style-type: none">• Over 100 docs (residents, attending physicians, NP)• Performed by physician, if done at all• They may or may not provide an informational brochure we have in the clinic that discusses the pros, cons, and outcomes of prostate screening, and why the patient's input is necessary.• There is no quality control as to whether shared decision making occurs in appropriate candidates.	<ul style="list-style-type: none">• Appropriate candidates would be identified via our EMR proactively by non-MD staff• Pt would be provided a validated SDM tool (English or Spanish)• Could complete either before physically coming if on our EMR patient portal or in person prior to seeing provider if not on the portal• Provider would be prompted to discuss with pt to arrive at screening decision.• Would only need to happen once for patients. Provider would document shared decision making occurred using template.

Potential Patient Case Presentations

Case Presentation Form Questions:

- Patient Age
- Patient Sex
- Patient Race and Ethnicity
- Past Medical/Surgical History
- Past Cancer Screening History
- Medications
- Family History
- What strategies or actions have you tried so far?
- **What is your main question about this case?**

Should this patient be screened with PSA?

Is this a normal PSA? (screening or post surgery)?

Should I refer for biopsy or MRI first?

How often should I repeat PSA for this patient?

How should I reframe this conversation with the patient?

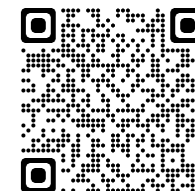
Case Presentation Schedule

Date	Session	Presenter & Health System
Feb 20	Session 1: The Science of Prostate Cancer Screening	1.
Mar 19	Session 2: Informed Decision Making, Effective SDM Conversations and Decision Aids	1.
April 16	Session 3: Addressing Implicit Bias within Primary Care	1.
May 21	Session 4: Utilizing data to risk stratify patients, track SDM, and track PSA results	1.
		2.

Date	Session	Presenter & Health System
June 18	Session 5: Increasing relationships and streamlined referral pathways	1.
		2.
July 16	Session 6: Utilizing data for pre-biopsy risk calculation and/or referral	1.
		2.
Aug 20	Session 7: Tailoring screening frequency and using/navigating patients to secondary tests	1.
		2.
Sept 17	Session 8: Managing/co-managing treatment including active surveillance.	1.
		2.



A member of the Hub team will confirm your case presentation date and work with you to ensure your experience is easy AND valuable.



[Case Presentation Form](#)



Wrap Up

C-SASI: Capacity, Systems, and Strategies Inventory

<https://redcap.link/prostateecho>

- **One** C-SASI per Participant Site
- Submit in RedCap on or before **2/21/2024**
- Reach out to molly.black@cancer.org with questions. We are here to help!



Like the link in the chat once you have the C-SASI open.

Pre-ECHO Series Assessment

- We are proactively fighting survey fatigue!
- One week to complete.
- Survey will be emailed out 2/9. **For submission on or before 2/16.**
- Each Primary Care Participant Site team member should complete their own assessment.

A Few Reminders



Participant Pre-Series Assessment: **Due 2/16/2024**



Next Session: **2/20/2024 (4:30 PM ET)** Session 1: **The Science of Prostate Cancer Screening** | Presented by: Andrew M.D. Wolf, MD, MACP and Yaw A. Nyame, MD, MS, MBA



System C-SASI Baseline (in REDCap): **Due 2/21/2024**



Slides, Recordings, Case Summaries & Resources will be made available within one week on the **ACS ECHO Website**.



Sign-up for your ONE **Case Presentation!** Email Beth.Graham@cancer.org.



Want to invite additional team members to future ECHO sessions? Email Beth.Graham@cancer.org for an **iECHO invitation**.

Today's Learning Objectives

We hope you are now able to:

1. Identify and relate to our ECHO's Participating Sites, Subject Matter Experts and ACS ECHO team members.
2. Describe elements of the Prostate Cancer Screening IMPACT ECHO that maintain fidelity to the proven Project ECHO model.
3. Give examples of potential case presentation topics.
4. Report the C-SASI data collection tool was accessed by your system.



Thank You!

See you again
Tuesday, February 20th at
4:30 ET • 3:30 CT • 1:30 PT
in iECHO Zoom