



Thursday, June 1, 2023 • 11:30 am CST/12:30 pm EST

# Health Equity & Caregiving: Meeting the Needs of African American/Black Caregivers ECHO

**Session 0:** Orientation

Welcome to the Orientation Session of the

# Health Equity & Caregiving: Meeting the Needs of African American/Black Caregivers ECHO



Each ECHO session will be recorded and **may** be posted to a publicly-facing website



You will be muted with your video turned off when you join the call. Use the buttons in the *black* menu bar to unmute your line and to turn on your video. **If you do not wish to have your image recorded, please turn OFF the video option.**



Today's materials will be made available on our ACS ECHO website.



Please type your full name, the full name of your organization, and e-mail in the chat box



This ECHO session takes place on the Zoom platform. To review Zoom's privacy policy, please visit [zoom.us/privacy](https://zoom.us/privacy)



Questions about Zoom? Type in the chat box [@Beth Graham](#)

**This project is funded by EMD Serono**



embracing carers

Please **type** your **full name, title, full name of your organization,** and **e-mail** in the chat box. If multiple participants are joining from a conference room, please add name, title and e-mail for all attendees for documentation purposes. **Thank you so much!**



**Have a question?** Don't wait to ask! Feel free to enter in the Chat at any time.

# Today's Agenda

- 1 Welcome & Housekeeping**  
5 minutes
- 2 ECHO Subject Matter Expert (SME) & Participant Site Introductions**  
15 minutes
- 3 Project Goals & Introduction to Health Equity & Caregiving**  
10 minutes
- 4 Introduction to the ECHO Model**  
15 minutes
- 5 Open Discussion/Q&A**  
10 minutes
- 6 Wrap Up**  
5 minutes



**Siobhan Aaron,**  
**PhD, MBA, RN, FNP-BC**  
Assistant Professor, Frances Payne  
Bolton School of Nursing

## Session 0

# ECHO Subject Matter Expert (SME) & Participant Site Introductions

# Introductions

## Meet Our Health Equity & Caregiving: Meeting the Needs of African American/Black Caregivers ECHO HUB



**Rachel Cannady**  
Strategic Director, Caregiving,  
American Cancer Society  
**ACS ECHO Program Lead**



**Siobhan Aaron,**  
**PhD, MBA, RNFP-BC**  
Assistant Professor,  
Frances Payne Bolton  
School of Nursing, Case  
Western Reserve University  
**ECHO Facilitator**



**Mindi Odom**  
American Cancer Society  
**Director, Project ECHO**



**Beth Graham,**  
**MPH, CHES**  
American Cancer Society  
**Program Manager,**  
**Project ECHO**



**Allison Rosen**  
American Cancer Society  
**Director, Project ECHO**



**Beth Dickson-Gavney,**  
**MS, MA**  
American Cancer Society  
**Senior Director, Project ECHO**



# Introductions

## Meet Our Health Equity & Caregiving: Meeting the Needs of African American/Black Caregivers ECHO HUB Subject Matter Experts (SMEs)



**Robert A. Winn, MD**  
Dir. and Lipman Chair in  
Oncology. Sr. Assoc. Dean  
for Cancer Innovation and  
Prof. of Pulmonary Disease  
and Critical Care Medicine  
**VCU Massey Cancer Center**



**Joseph E. Ravenell, MD**  
Assoc. Dean for Diversity Affairs  
and Inclusion,  
Dir., Diversity in Research,  
Perlmutter Cancer Center,  
Assoc. Prof., Dept. of Pop. Health  
**NYU Langone Health**



**Olufunke Awosogba, PhD**  
Asst. Prof. and Vice Chair  
of Diversity, Equity, and  
Inclusion in Dept. of Psychiatry,  
Dir. Behavioral Health Program  
in Hem/Onc Outpatient Clinic  
Parkland Hospital  
**UT Southwestern Medical Center**



**Fawn Cothran, PhD, RN,  
GCNS-BC, FGSA**  
Hunt Research Director  
**The National Alliance for  
Caregiving**



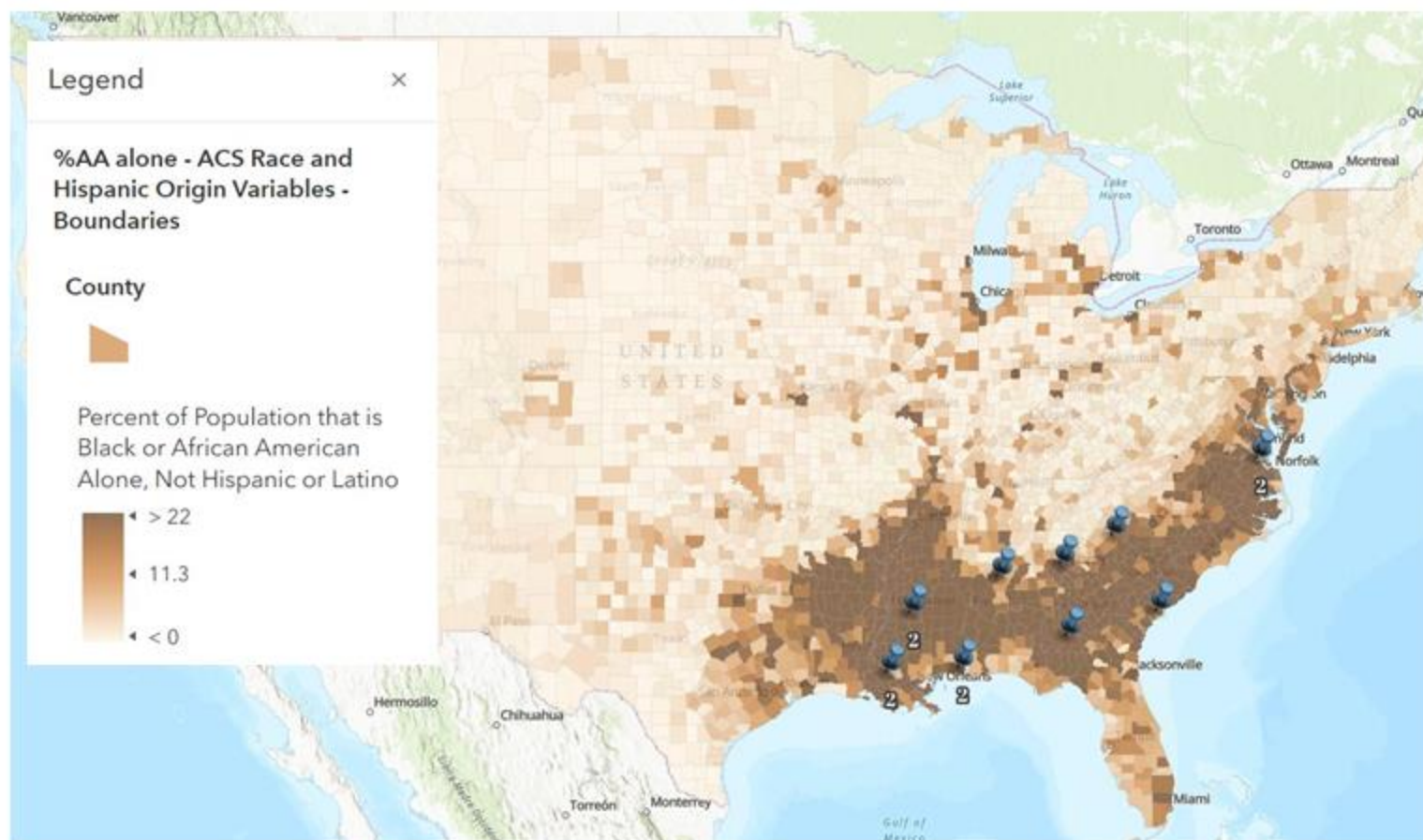
**Cardinale B. Smith,  
MD, PhD**  
Prof. of Medicine (Hem/Onc) and  
Prof. of Geriatrics and Palliative  
Medicine, Chief Medical Officer –  
Tisch Cancer Hospital  
**Icahn School of Medicine at  
Mount Sinai**



**Katrina R. Ellis**  
Asst. Prof. Social Work and Faculty  
Assoc., Research Center for Group  
Dynamics, Institute for Social  
Research  
**University of Michigan**

# Health Equity and Caregiving: Meeting the Needs of African American/Black Caregivers ECHO (June 2023 – November 2023)

## Participating Health Systems from States with Higher Percentage of Non-Hispanic Black or African American Alone, Not Hispanic or Latino Population, Year?



Participating Cancer Centers		
Health System	City	ST
Infirmiry Cancer Care (Infirmiry Health)	Mobile	AL
O'Neal Comprehensive Cancer Center at University of Alabama at Birmingham - Wallace Tumor Institute	Birmingham	AL
Northside Hospital Cancer Institute	Atlanta	GA
Phoebe Cancer Center	Albany	GA
Our Lady of the Lake Cancer Institute	Baton Rouge	LA
Woman's & Mary Bird Perkins - Our Lady of the Lake Cancer Center Breast & GYN Cancer Pavilion	Baton Rouge	LA
Singing River Health System Cancer Center	Pascagoula	MS
St. Dominic's Comprehensive Cancer Services	Jackson	MS
University of Mississippi Medical Center Cancer Center and Research Institute	Jackson	MS
Beaufort Memorial Keyserling Cancer Center	Beaufort	SC
Prisma Health Cancer Institute	Greenville	SC
Sentara Healthcare	Norfolk	VA
VCU Massey Cancer Center	Richmond	VA

# Introductions: Meet our **ALABAMA** participant Sites



**UAB MEDICINE**

The University of Alabama at Birmingham

Cancer Center	City/ST	Lead	Title
Infirmary Cancer Care	Mobile, AL	Patricia Johnson	Manager of Navigation
O'Neal Comprehensive Cancer Center at the University of Alabama at Birmingham – Wallace Tumor Institute	Birmingham, Al	Dorothea Staursky, DHA, MBA, MHA	Manager, Strategic Initiatives

# Introductions: Meet our **GEORGIA** participant Sites



**NORTHSIDE  
HOSPITAL**  
CANCER INSTITUTE



Cancer Center	City/ST	Lead	Title
Northside Hospital Cancer Institute	Atlanta, GA	Astrid Wilkie-McKellar, MPH	Manager, Community Outreach & Engagement Program
Phoebe Cancer Center	Albany, GA	Keisa Mansfield, MPA	Manager Clinical Research, Genetic Testing, Community Outreach, & Oncology Wellness

# Introductions:

## Meet our **LOUISIANA** participant Sites



**Our Lady of the Lake  
Cancer Institute**

Cancer Center	City/ST	Lead	Title
Our Lady of the Lake Cancer Institute	Baton Rouge, LA	Denise D. Bradford, MSN, RN	Director of Cancer Navigation and Support
Woman's & Mary Bird Perkins - Our Lady of the Lake Cancer Center Breast & GYN Cancer Pavilion	Baton Rouge, LA	Renada W. Deschamp, MPA, CDE®, MCCT	Vice President, Diversity, Equity, & Inclusion



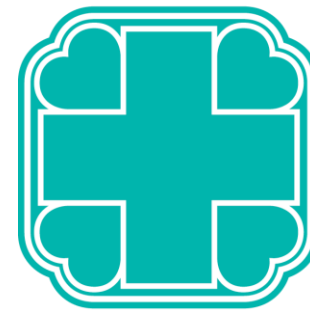
# Introductions: Meet our **MISSISSIPPI** participant Sites

Cancer Center	City/ST	Lead	Title
Singing River Health System Cancer Center	Pascagoula, MS	Donna Burks, LCSW	Social Worker
St. Dominic's Comprehensive Cancer Services	Jackson, MS	Jimmie Wells, RN, MSN, OCN	Oncology Survivorship Navigator
University of Mississippi Medical Center Cancer Center and Research Institute	Jackson, MS	Lisa Honeycutt, DNP, RN, OCN	Director, Oncology Service Line



# Introductions:

## Meet our **SOUTH CAROLINA** participant Sites



Beaufort  
Memorial

**PRISMA**

HEALTH®

Cancer Center	City/ST	Lead	Title
Beaufort Memorial Keyserling Cancer Center	Beaufort, SC	COL(R) J. Mark Hennigan, MSSL, BS, BSN, RN, NE-BC	Director, Oncology Services
Prisma Health Cancer Institute	Greenville, SC	Tanya B. Carter, LMSW, CHC	Social Worker II, Oncology Support Services, Distress Management

# Introductions: Meet our **VIRGINIA** participant Sites



Cancer Center	City/ST	Lead	Title
Sentara Healthcare	Norfolk, VA	Lindsay N. Rushing, BSN,RN,OCN,CBCN,CN-BN	Team Coordinator, Patient Care Services – Oncology Service
VCU Massey Cancer Center	Richmond, VA	Demetrice Thomas, RN, MS, CNML	Manager Oncology, Clinical Administration





## Session 0

# Project Goals & Introduction to Health Equity & Caregiving

**Rachel Cannady**

Strategic Director, Caregiving  
American Cancer Society

# Learning objectives

**ECHO PROGRAM GOAL:** Educate participants on the unique needs of African American/Black Caregivers



- 1 Defining and demonstrating knowledge of health equity, health inequalities, and social determinants of health in the context of cancer caregiving
- 2 Mobilizing leaders in healthcare to engage in policy, systems, and environmental change activities in support of health equity and caregiving; and
- 3 Leveraging partnerships (locally or state-wide/ across-state) and collaborations to advance health equity and caregiving.

# SCHEDULE

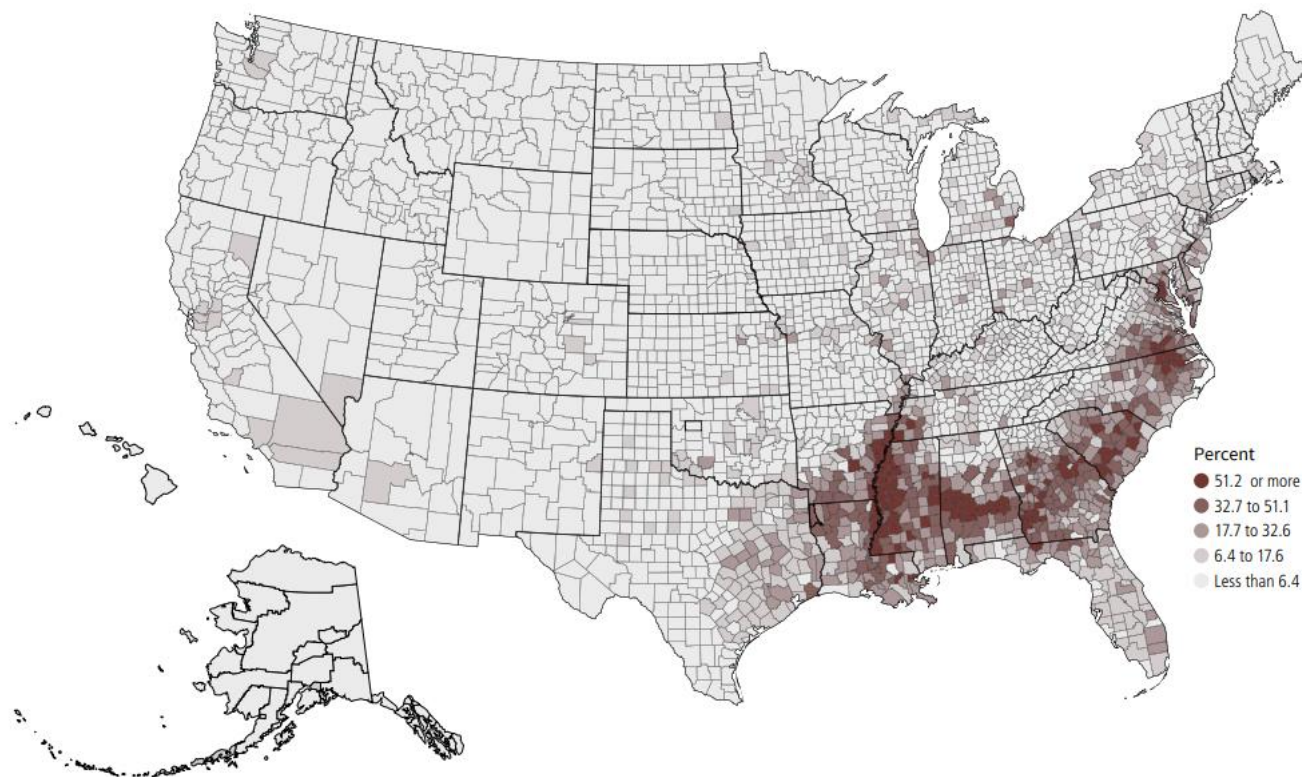


Date	Session	Topic	Didactic Presenter
June 1st 11:30-12:30 CT	Session 0	Orientation	No didactic presenter
June 9th 9:00-10:00 CT	Session 1	How Social Determinants of Health Impact Caregiving	<u>Robert A. Winn, MD</u> <i>VCU Massey Cancer Center</i>
July 7th 11:30-12:30 CT	Session 2	Part I: Medical Mistrust – Historical Examples & its Relation to Health Equity	<u>Joseph E. Ravenell, MD</u> <i>NYU Langone Health</i>
August 14th 4:00-5:00 CT	Session 3	Part II: Medical Mistrust – How to Address it in Your Health System	<u>Olufunke Awosogba, PhD</u> <i>UT Southwestern Medical Center</i>
September 11th 11:30-12:30 CT	Session 4	Mental Health & Caregiving	<u>Fawn Cothran, PhD, RN, GCNS-BC, FGSA</u> <i>National Alliance for Caregiving</i>
October 12th 11:30-12:30 CT	Session 5	Integrating the Family Voice in Palliative Care	<u>Cardinale Smith, MD, PhD</u> <i>Icahn School of Med. – Mount Sinai</i>
November 6th 11:30-12:30 CT	Session 6	Practicing Cultural Humility While Providing Support to African American/Black Caregivers	<u>Katrina R. Ellis, PhD</u> <i>University of Michigan</i>

# ACS Caregiver Support

## Cancer Facts & Figures for African American/Black People 2022–2024

Figure 1. Non-Hispanic Black Population as a Percentage of Total County Population, 2020



Source: US Census Bureau, 2020 Decennial Census Redistricting Data. Released September 2021.

©2022, American Cancer Society, Inc., Surveillance and Health Equity Science

## Focus Group: 32 caregivers interviewed

**Purpose:** Investigate African American/Black Caregivers' experiences and needs in caring for an individual with cancer  
Improve the lives of people with cancer and their families through advocacy, research, and patient support, to ensure everyone has an opportunity to prevent, detect, treat, and survive cancer.

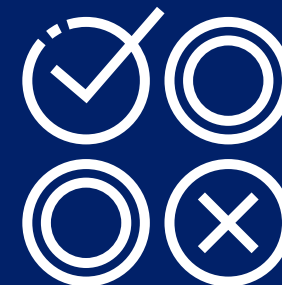
What are their perceptions of providing care to a person with cancer?



What are their unmet needs?

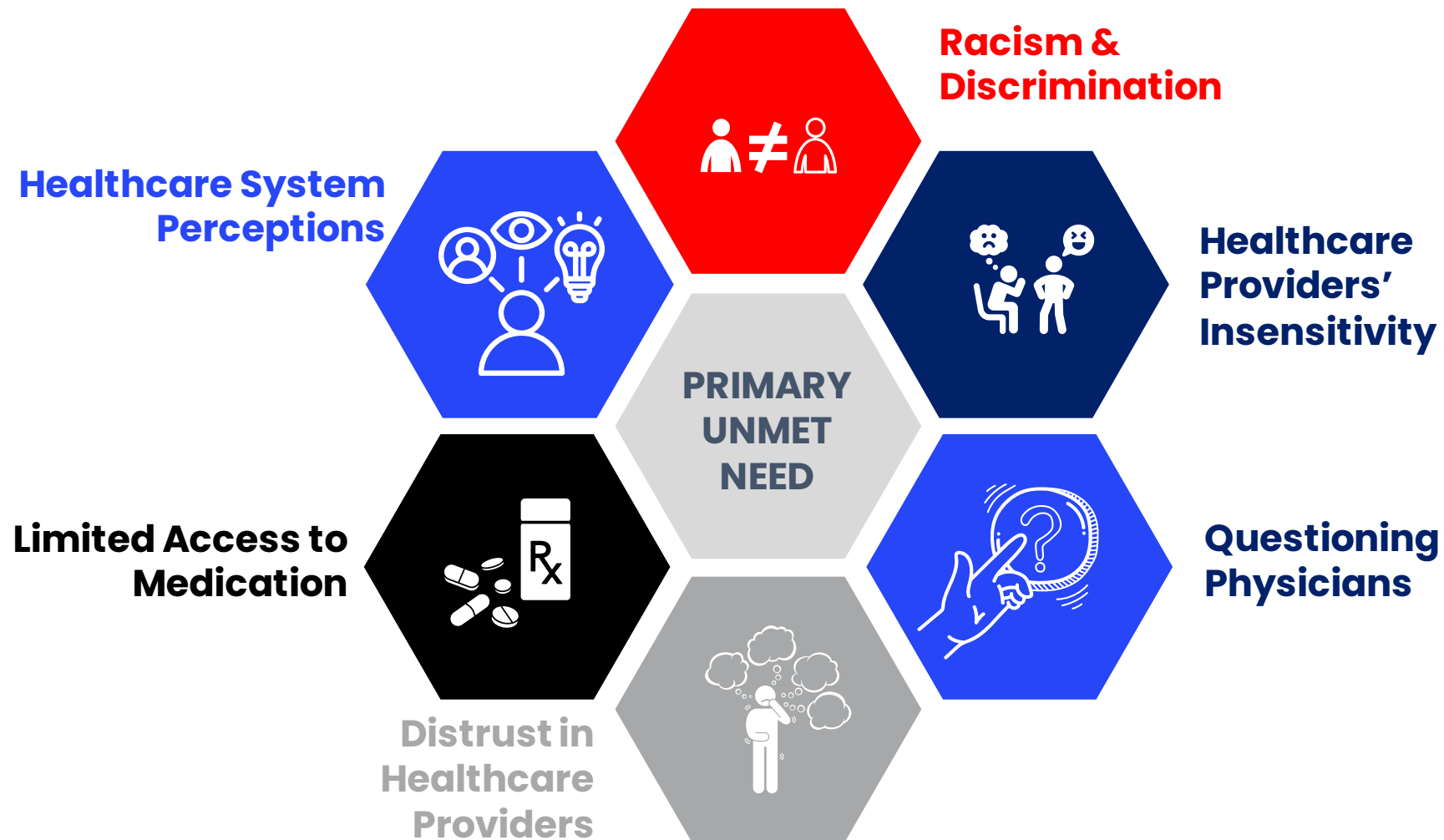


What are their preferences for how to best meet their needs?



# Primary Unmet Need

Relationship with Healthcare Providers



# How to Improve African American/Black Caregivers'

## Experiences

**Provide more  
information**

**Share information  
when caregiver is  
present**

**Increase advocacy  
resources**

**Daily or household resources**

**Organizational  
resources**

**Suggestions for the American Cancer Society**



## Session 0

# Introduction to the ECHO Model

**Mindi Odom**

Director, Project ECHO  
American Cancer Society



# ECHO Participation Poll



Today's Session will **NOT** serve as a typical ECHO session but instead will function more like a traditional interactive webinar.

# About Project ECHO

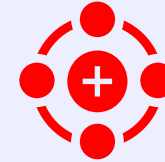
- **Moving Knowledge, Not People**
- Empowering people to make a difference in their communities with the **right knowledge**, at the **right place**, at the **right time**
- Builds **communities of practice** through **virtual mentoring & learning**
- **One-to-many** intervention proven effective to reduce disparities, strengthen health systems, & drive collaborative solutions for local priorities
- **Effective/Efficient** vehicle for dissemination of evidence-based strategies to improve cancer outcomes
- Participants **attend virtual case-based sessions** with subject-matter experts
- The participants and subject-matter experts all learn from each other: knowledge is generated, refined and tested by local experience. This **“all teach, all learn”** method **democratizes expertise** and makes it relevant to local cultural contexts.

The American Cancer Society serves as a **Project ECHO** (Extension for Community Healthcare Outcomes) Hub

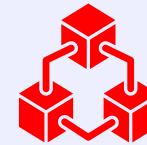
## ECHO is all teach, all learn



Interactive



Co-management of cases



Peer-to-peer learning



Collaborative problem solving

# Expectations of Participating Learning Sites

## During the ECHO Program

- Build a small multidisciplinary ECHO team from your cancer center
- Have at least **one** team member join each monthly 60-minute ECHO session (participate in discussion with video on)
- Submit at least **one** case presentation to be delivered on behalf of your cancer center over the course of the ECHO Program
- Complete pre-ECHO (and immediate post-ECHO) assessments, along with brief post-session poll surveys
- Complete 6-month follow-up survey/assessment



**Reminder:** If you have not already, please be sure you're registered for all 6 ECHO Sessions and have the Zoom invitation in your calendar. If you need assistance with registration, please contact your local ACS team member or the **ACSECHO Office** at [echo@cancer.org](mailto:echo@cancer.org)

# Expectations of Participating Learning Sites

## Post-ECHO Program Recommendations for Buildout

- Develop a healthcare team resource that integrates knowledge learned from the ECHO (for example, create and disseminate content on health equity and caregiving that is included in the new hire onboarding process and/or in yearly Diversity, Equity & Inclusion trainings)
- Integrate culturally sensitive practices across all clinical exchanges with caregivers
- Ongoing presence of health equity and caregiving updates to your hospital's Cancer Committee and/or Grand Rounds
- Identify local support services and resources for African American/Black caregivers to whom navigators and other support staff may refer caregivers/patients



**Reminder:** If you have not already, please be sure you're registered for all 6 ECHO Sessions and have the Zoom invitation in your calendar. If you need assistance with registration, please contact your local ACS team member or the **ACSECHO Office** at [echo@cancer.org](mailto:echo@cancer.org)

# What to Expect: The Anatomy of an ECHO Session

- **Welcome & introductions** (5 minutes)
- **Announcements & session overview** (5 minutes)
- **Brief Didactic Lecture/Presentation** (10-15 minutes at most)
- **Didactic Q/A** (5-10 minutes)
- **Case Presentation(s)** (25 minutes total)
  - **Introduction** (1 minute)
  - **Case Presentation** (5 - 7 minutes)
  - **Clarifying Questions** – 1st to hub SMEs, 2nd to other participants (5 minutes)
  - **Recommendations** – 1st to participants, 2nd to hub SMEs (5 minutes)
  - **Wrap-Up Case Presentation** (1 minute)
- **Closing remarks, Wrap-Up & Post-Session Survey Poll** (5 min)

## What is a Case Presentation?

Case presentations are **vital** to each ECHO session. The case presentation is based on a real-life scenario and is an opportunity for a participant to request advice and recommendations from other participants and the Hub Team.

These cases are challenges or perceived barriers that can be either system-level or patient-level.

**Subject matter experts (SMES)** and participant learners will offer their guidance. This section of each ECHO session serves as an interactive learning feedback loop for all attendees.

! For more about the **ECHO Model™** or **Project ECHO**, please visit <https://hsc.unm.edu/echo/>

# Health Equity & Caregiving: Meeting the Needs of African American/Black Caregivers

## ECHO Project Case Study Overview

### Presenting a Case Study

- Submission of cases for presentation and discussion is a key component in the ECHO model®.
- It is critically important for knowledge building and sharing for all ECHO participants and is therefore an expectation for cancer care teams to present a case study.
- Cancer Care Teams are encouraged to present a case study involving information on the unique needs and barriers to care of
- African American/Black caregivers. This may include social determinants of health, medical mistrust, mental health and caregiving, doctor-patient/caregiver communication in palliative care, and/or practicing cultural humility while providing support to AA/Black caregivers.
- Please submit **this form**, a high-resolution photo, and a brief (one paragraph) bio to [Beth.Graham@cancer.org](mailto:Beth.Graham@cancer.org) at least **two weeks** prior to the ECHO session. This will allow faculty to review the case before the session to maximize our time together.

Health Equity & Caregiving: Meeting the Needs of AA/Black Caregivers ECHO Case Study

ECHO sessions are made up of didactic presentations and then brief case studies that can elicit input and discussion from the ECHO faculty, speakers, and participants for the benefit of all.

This form includes 3 sections: Presenter Information, Case Presentation and Faculty Comments/Questions. We approximate each case presentation will be 5 minutes. Please be sure not to include patient identifiers on this form or use any identifiers during the presentation.

Please note, for patient-level case presentations, the faculty will provide guidance that should NOT be interpreted as direct medical advice.

Please submit this form **two weeks** prior to the ECHO session.

Project ECHO Data Usage Statement:  
Project ECHO collects registration, participation, questions/answers, chat comments and poll responses for some teleECHO programs. Your individual data will be kept confidential. These data may be used for reports, maps, communications, surveys, quality assurance, evaluation, research, and to inform new initiatives.

\* Required

1. Presentation Date \*

Please input date (M/d/yyyy)

2. Presenter Prefix (e.g. Mr., Mrs., Ms., Dr., etc.) \*

Enter your answer

3. Presenter Full Name(s) (as you wish it to appear on the PPT Presentation) \*

Enter your answer

# The Case Presentation Process



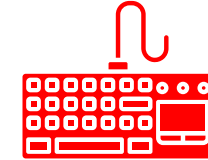
Participants will submit their case presentation forms at **least two weeks** prior to the ECHO session. The Case presentation form serves as the sole requirement. Additional Slides are optional.



Subject Matter Experts will receive the case presentation at **least 48 hours in advance** and can provide advance written feedback and or verbal feedback during the ECHO session.



The case presentation does **NOT** have to be thematic to the didactic presentation (while it may improve the session flow).



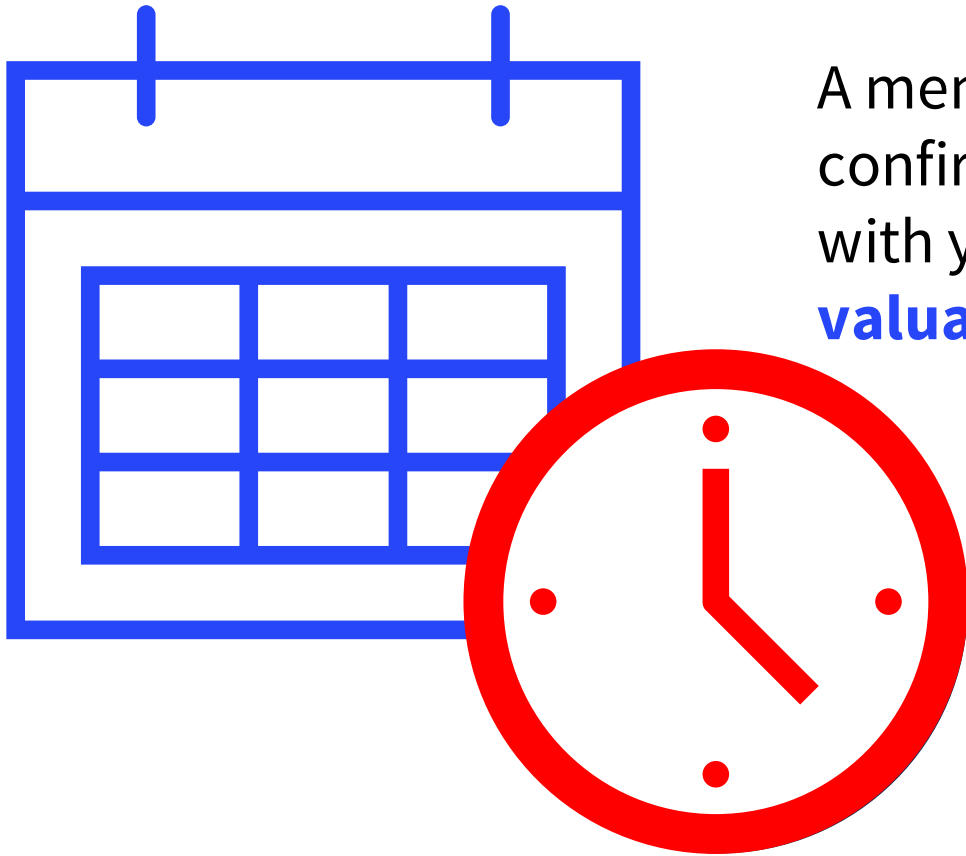
The ACS ECHO Coordinator will type the key takeaways and recommendations, which will be sent out to in the post-session recap.

Case presentations are the heart of the **ECHO Model™**, ensuring that **“everyone teaches, everyone learns.”**



# Ready to Schedule your Case Presentation?

Please Email your **ACS Staff Lead** with your preferred case presentation date.



A member of the **ACS ECHO Hub team** will confirm your case presentation date and work with you to ensure your experience is **easy** and **valuable**.

**All meeting materials**, including the **case presentation notes**, will be disseminated and uploaded within one week of the session.



**Siobhan Aaron,**  
**PhD, MBA, RN, FNP-BC**  
Assistant Professor, Frances Payne  
Bolton School of Nursing

## Session 0

### Open Discussion –



# Open Discussion: Questions & Answers

# SCHEDULE



Date	Session	Topic	Didactic Presenter
June 1st 11:30-12:30 CT	Session 0	Orientation	No didactic presenter
June 9th 9:00-10:00 CT	Session 1	How Social Determinants of Health Impact Caregiving	<u>Robert A. Winn, MD</u> <i>VCU Massey Cancer Center</i>
July 7th 11:30-12:30 CT	Session 2	Part I: Medical Mistrust – Historical Examples & its Relation to Health Equity	<u>Joseph E. Ravenell, MD</u> <i>NYU Langone Health</i>
August 14th 4:00-5:00 CT	Session 3	Part II: Medical Mistrust – How to Address it in Your Health System	<u>Olufunke Awosogba, PhD</u> <i>UT Southwestern Medical Center</i>
September 11th 11:30-12:30 CT	Session 4	Mental Health & Caregiving	<u>Fawn Cothran, PhD, RN, GCNS-BC, FGSA</u> <i>National Alliance for Caregiving</i>
October 12th 11:30-12:30 CT	Session 5	Integrating the Family Voice in Palliative Care	<u>Cardinale Smith, MD, PhD</u> <i>Icahn School of Med. – Mount Sinai</i>
November 6th 11:30-12:30 CT	Session 6	Practicing Cultural Humility While Providing Support to African American/Black Caregivers	<u>Katrina R. Ellis, PhD</u> <i>University of Michigan</i>



# Wrap up

# A Few Reminders



**Next ECHO Session:** Friday, June 9, 2023, 9:00 am – 10:00 am CST/10:00 am – 11 am EST



**Next Didactic Presenter:** Robert Winn, MD **Topic:** How Social Determinants of Health Impact Caregiving



**Slides, Recordings, & Resources** will be made available within one week. All resources will be available on the [ACS ECHO Website](#).



**Case Presentations – Participants/Participant Sites:** Ready to schedule your Case Presentation? Let us know ASAP, please. **Hub Subject Matter Experts (SMEs):** All future case presentations will be shared with you at 24-hours in advance



Additional Feedback on Today's Session? **Let us know at [echo@cancer.org](mailto:echo@cancer.org)**



**Questions?** Contact Rachel Cannady – [Rachel.cannady@cancer.org](mailto:Rachel.cannady@cancer.org) or 404.327.6441



**Register** for Session 1 (6-9-23) [HERE](#) or use this QR Code





# Thank You